

M T S U LIBRARY



3 3082 00529 0340

MIDLANDER

35

OFFICE OF ALUMNI RELATIONS
MIDDLE TENNESSEE STATE UNIVERSITY
MURFREESBORO

~~Office of the President~~







The Midlander

VOLUME X

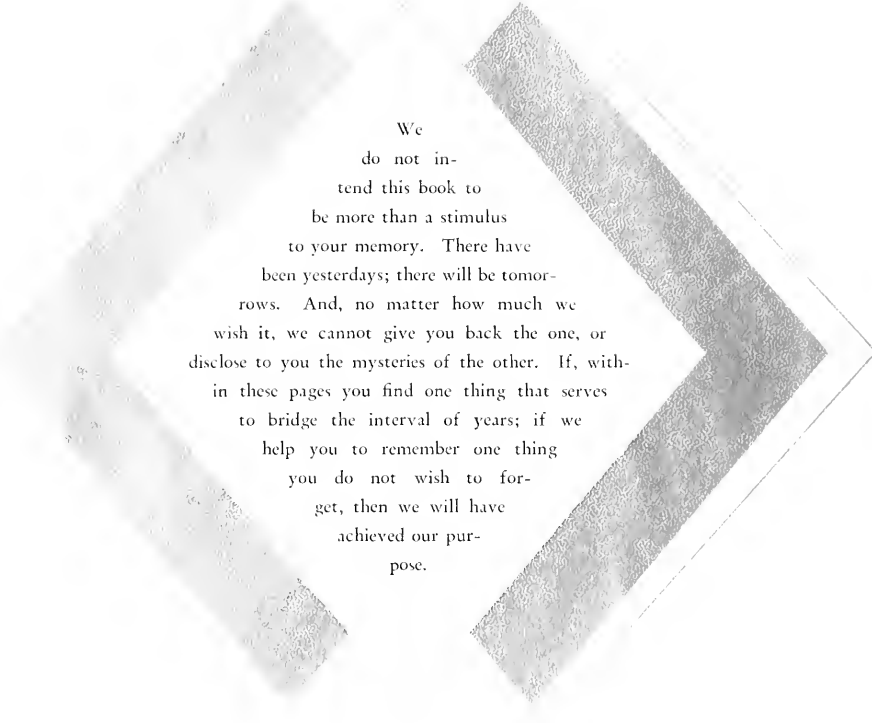
1935

*Published by the
Graduating
Class of*

STATE TEACHERS COLLEGE
MURFREESBORO, TENNESSEE

Library
Middle Tennessee State University
Murfreesboro, Tennessee

REWORD



We
do not in-
tend this book to
be more than a stimulus
to your memory. There have
been yesterdays; there will be tomor-
rows. And, no matter how much we
wish it, we cannot give you back the one, or
disclose to you the mysteries of the other. If, with-
in these pages you find one thing that serves
to bridge the interval of years; if we
help you to remember one thing
you do not wish to for-
get, then we will have
achieved our pur-
pose.

Contents

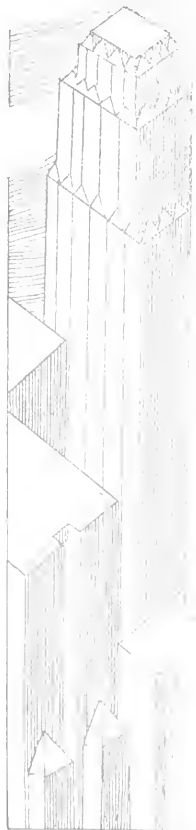
THE COLLEGE

THE CLASSES

ATHLETICS

ORGANIZATIONS

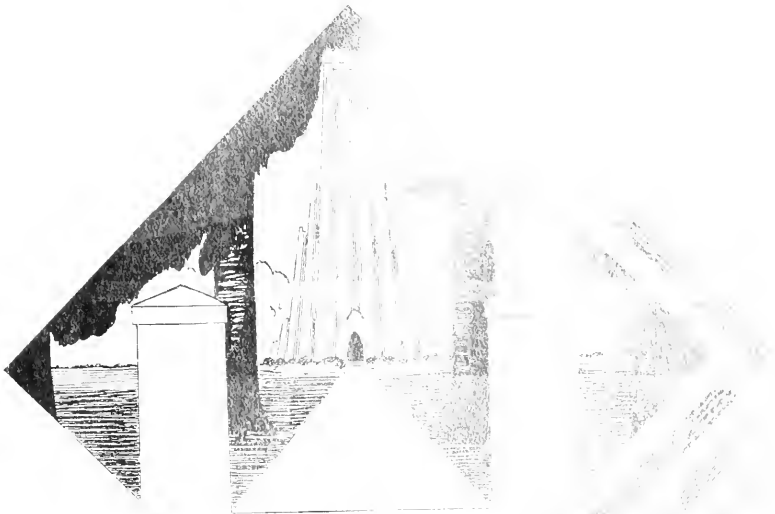
FEATURES



Dedication



*To that rare combination of scientist
and humorist, Dr. A. A. O'Kelly,
we, the Senior Class of 1935,
affectionately dedicate
this issue of the
Midlander.*



Digitized by the Internet Archive
in 2010 with funding from
Lyrisis Members and Sloan Foundation

THE COLLIER

<http://www.archive.org/details/midlander10midd>



Airplane View of the College



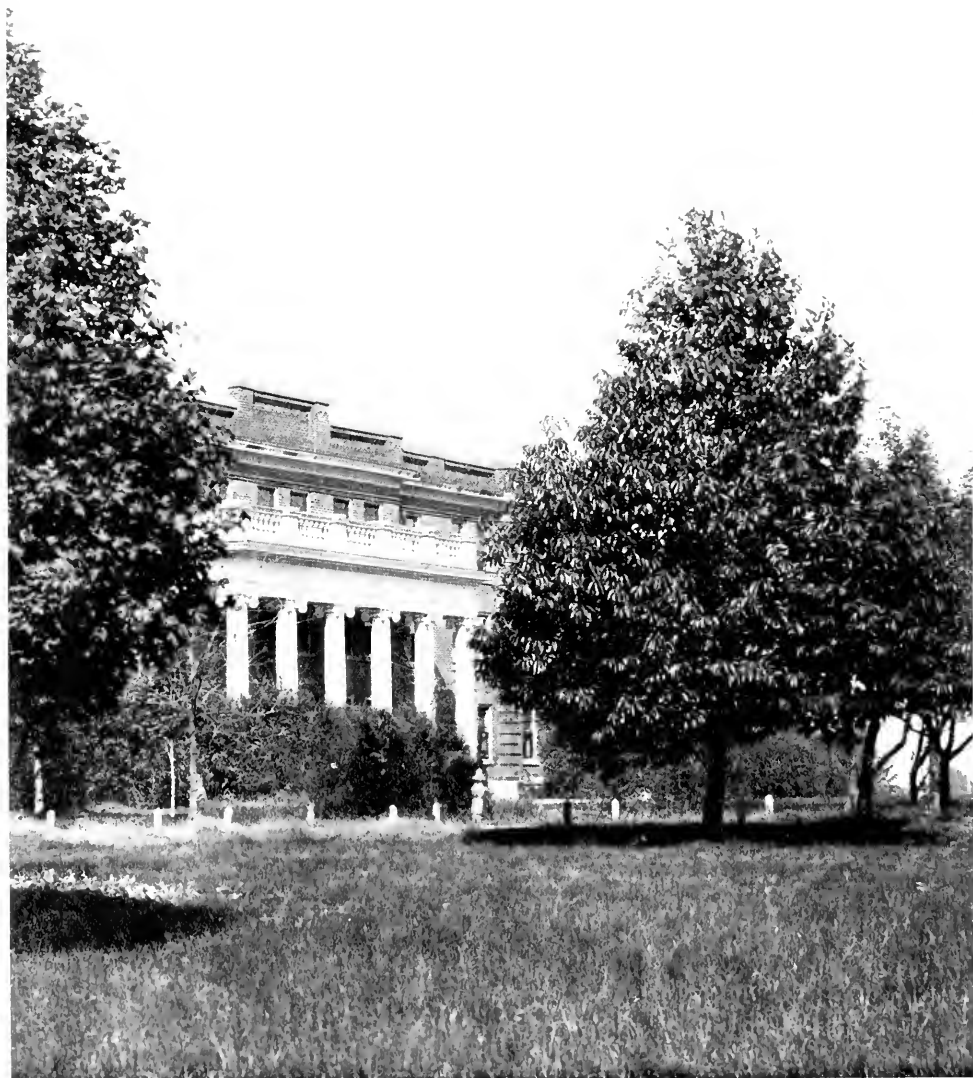
Administration Building



Library



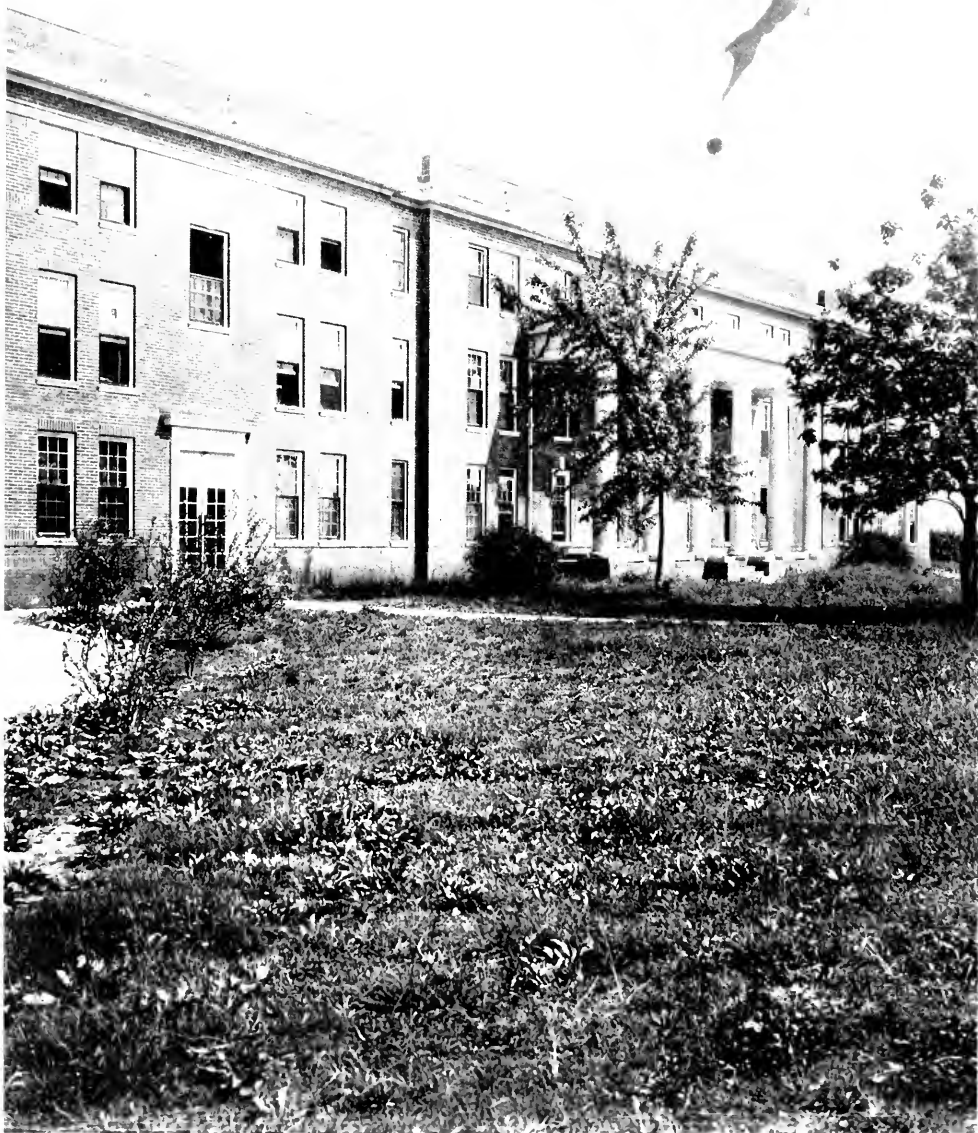
Science Building



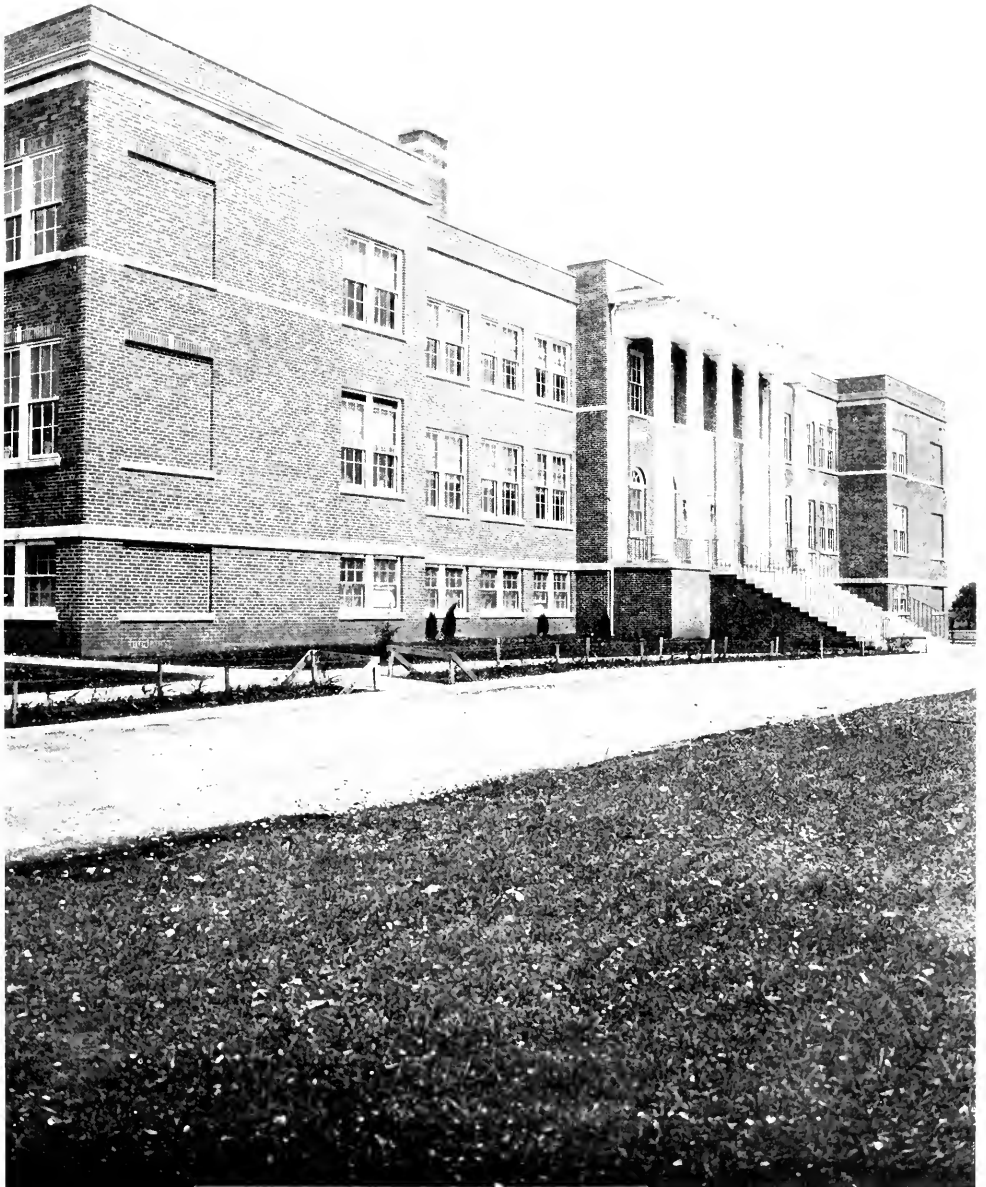
Rutledge Hall



Lyon Hall



Jones Hall



Training School



President's Home



Cafeteria

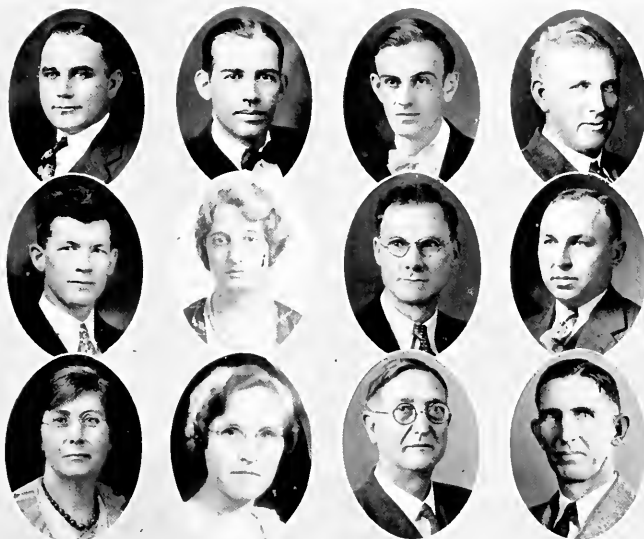
The Messenger



PRITCHETT ALFRED LYON
President

NATHANIEL CRAIG BLASLEY
Dean-Registrar





FACULTY

FRANK E. BASS

History

B.S., State Teachers College, Murfreesboro, 1926;
M.A., George Peabody College, 1930.

N. C. BEASLEY

Education

B.S., George Peabody College, 1923; M.A., George Peabody College, 1927; Graduate Student, George Peabody College.

PHILIP MACON CHEEK

Foreign Languages

A.B., University of North Carolina, 1928; A.M., University of North Carolina, 1928; Ph.D., University of North Carolina, 1931.

GEORGE DAVIS

Biology

B.S., University of Chattanooga, 1914; M.A., George Peabody College, 1928.

MARION EDNEY

Biology

B.S., State Teachers College, Murfreesboro, 1933; M.A., University of Iowa, 1934.

MAY C. FRANK

Home Economics

B.S., Columbia University, 1925; M.S., Iowa State College, 1931; Graduate Work, Iowa State College, 1934.

NEAL D. FRAZIER

English

B.S., George Peabody College, 1917; M.A., George Peabody College, 1921; Graduate Student, George Peabody College.

OTIS L. FREEMAN

Manual Arts

B.S., State Teachers College, Murfreesboro, 1928; M.S., Iowa State College, 1933.

LOUISE FREY

English

A.B., Berea College, 1913; M.A., Teachers College, Columbia, 1927; Ph.D., George Peabody College, 1931.

MARY FRIZZELL

Primary Education

B.S., George Peabody College, 1926; M.A., George Peabody College, 1927.

THOMAS J. GOLIGHTLY

Education

A.B., Transylvania, 1904; B.D., Yale, 1906; Ph.D., George Peabody College, 1926.

B. B. GRACY

Physical Education

B.S.A., University of Florida, 1915; M.A., George Peabody College, 1928.



FACULTY

OLLIE GREEN

Geography

B.S., George Peabody College, 1925; M.A., George Peabody College, 1926.

KNOX T. HUTCHINSON

Agriculture

B.S., George Peabody College, 1921; M.A., George Peabody College, 1922; Graduate Student, George Peabody College.

HORACE JONES

Mathematics

B.S., State Teachers College, Murfreesboro, 1926; M.A., George Peabody College, 1927.

WILLIAM BINTON JUDD

History

B.S., State Teachers College, Murfreesboro, 1927; M.A., George Peabody College, 1927.

CHARLES D. LEWIS

Elementary Education

B.Ed., Kentucky State University, 1901; A.M., University of Illinois, 1917; Ph.D., George Peabody College, 1929.

AGNES LITTLE

Home Economics

B.S., University of Tennessee, 1918; M.A., George Peabody College, 1927.

PHILIP MANKIN

English

B.S., George Peabody College, 1925; M.A., George Peabody College, 1927.

WILLIAM M. MEBANE

Chemistry and Physics

B.S., University of North Carolina, 1925; M.A., University of North Carolina, 1926; Ph.D., University of North Carolina, 1929.

KATHARINE MONAHAN

History

A.B., Peabody Normal, 1892; M.A., University of Nashville, 1893.

A. A. O'KELLY

Chemistry

B.A., University of Arkansas, 1926; Ph.D., University of Colorado, 1929.

ANNE ORDWAY

English

Ph.B., University of Chicago, 1920; M.A., Vanderbilt University, 1927.

TOMMIE REYNOLDS

Physical Education

B.A., University of Nashville, 1911; M.A., George Peabody College, 1923.



FACULTY

HESTER ROGERS

Art

B.S., George Peabody College, 1923; M.A., University of Chicago, 1928.

E. MAY SAUNDERS

Music

B.S., State Teachers College, Murfreesboro, 1928; M.A., Columbia University, 1929.

ELIZABETH SCHARDT

Foreign Languages

B.A., University of Tennessee, 1912; M.A., George Peabody College, 1929; Special Student, University of Ghent.

ISA LEE SHERROD

Library

B.S., State Teachers College, Johnson City, 1933; M.A., Peabody College, 1934.

C. C. SIMS

History

LL.B., Cumberland University, 1913; B.S., George Peabody College, 1917; M.A., George Peabody College, 1922; Ph.D., University of Chicago, 1930.

E. M. WALLER

Health and Athletics

B.A., Vanderbilt, 1927; M.A., George Peabody College, 1933.

CLARK WOODWARD

Manual Arts

B.S., State Teachers College, Murfreesboro, 1931.

J. C. WALLER

Director, Training School

B.A., University of Chicago, 1908; M.A., Columbia University, 1914; Ph.D., George Peabody College, 1928.

ANN ASHLEY

Critic Teacher

B.S., State Teachers College, Murfreesboro, 1928; M.A., Peabody College, 1934.

KATE ASHLEY

Critic Teacher

B.S., State Teachers College, Murfreesboro, 1934.

MRS. JAMES CLAYTON

Critic Teacher

B.A., Vanderbilt University, 1928; M.A., Teachers College, Columbia University, 1932.

ANDRENA CROCKETT

Critic Teacher

B.S., State Teachers College, Murfreesboro, 1935.



FACULTY

MARY HALL

Critic Teacher

B.S., George Peabody College, 1927; M.A., George Peabody College, 1931.

MARGULRITH HARRISON

Critic Teacher

B.S., State Teachers College, Murfreesboro, 1926; M.A., George Peabody College, 1932.

MARGARET LOWE

Critic Teacher

B.S., State Teachers College, Murfreesboro, 1926; M.A., George Peabody College, 1929.

MRS. MARY MANLEY

Critic Teacher

B.S., State Teachers College, Murfreesboro, 1930; M.A., George Peabody College, 1932.

MRS. MADGE MANSON

Critic Teacher

A B., Athens College, Athens, Alabama, 1909; B.A., Tennessee College, Murfreesboro, 1925; M.A., University of Michigan, Ann Arbor, 1932.

RUTH PATE

Critic Teacher

B.S., State Teachers College, Murfreesboro, 1929; M.A., Teachers College, Columbia, 1933; Graduate Student, Teachers College, Columbia.

W. R. ROMINE

Critic Teacher

B.S., George Peabody College, 1924; M.A., George Peabody College, 1930.

ROY J. SIMPSON

Critic Teacher

B.S., State Teachers College, Murfreesboro, 1930; M.A., University of Michigan, 1933.

FRANCES SNELL

Critic Teacher

B.S., State Teachers College, Murfreesboro, 1929; M.A., Teachers College, Columbia University, 1932.

MRS. SCOTT WILLIAMS

Critic Teacher

A B., Union University; M.A., George Peabody College, 1932.



OFFICERS OF ADMINISTRATION

J. H. BAYER
Custodian of Property

J. S. HOLMES
Bursar

MARSHALL BURNS
Director of Vespers

MRS. BONNIE MCHENRY
Secretary to President

MRS. MARSHALL BURNS
Hostess, Rutledge Hall, College Nurse

MARGIE MITCHELL
Chief Hostess

C. W. DANIELS
Night Watchman

LORNE NEECE
Dictitian

MRS. O. L. FREEMAN
Hostess, Jones Hall

MARY WILSON PAYNE
Secretary to Dean

W. C. HASTINGS
Engineer

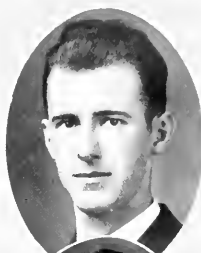
T. B. WOODMORE
Business Manager

STATE BOARD OF EDUCATION

HON. HILL McALISTER, <i>Governor of Tennessee</i>	Nashville
DR. W. D. COCKING, <i>Commissioner of Education</i>	Nashville
ROBERT L. PLICK, SR.	Springfield
JOHN REYNOLDS	Murfreesboro
R. L. FORRESTER	Watertown
W. E. LAUDRUM	Trenton
J. D. HAMILTON	Church Hill
SAM J. McALISTER	Chattanooga
C. B. IJAMS	Jackson
ERNST BALL	Memphis
MRS. RILEY STONE	Bristol



CLAS



OFFICERS OF SENIOR CLASS

E. M. WALLER

Sponsor

LOVELEEN WETZEL

President

CHATTANOOGA, TENNESSEE

Science; Tau Omicron, Treasurer, '35; President, W. A. C., '35; Football Sponsor, '33; Band, '31, '32, '33, '34; Orchestra, '31, '32, '33, '34; Wohelo Club, '32, '33; Science Club, '32, '33, Secretary, '34; Rural Life Club, '31, '32, '33, '34; Physical Education Assistant, '34, '35; T. Club, '34; Student Council, '35; Class Treasurer, '31, Secretary, '33, President, '35.

ELBERT WALKER

Vice-President

NASHVILLE, TENNESSEE

Social Science; Editor, Freshet, '32; Band Major, '33; Vice-President, B. S. U., '34; Vice-President, Senior Class, '35; Debating Club, '32.

MARY JONES

Secretary

PROSPECT, TENNESSEE

Social Science; English; Secretary, Senior Class, '35; Rural Life Club, '33, '34, Treasurer, '35; President, Woman's Student Council, '35; Y. W. C. A., '33, '34, '35; Tau Omicron, '35.

HERMAN CARROLL

Treasurer

ESTILL SPRINGS, TENNESSEE

History; Vice-President, International Relations Club, '35; Rural Life Club, '32, '33, '34, '35; Treasurer, Senior Class, '35; Sigma Club, '35.

JAMES NORTON

Sergeant-at-Arms

LAWRENCEBURG, TENNESSEE

Manual Arts; Basketball, '33, '34, '35; Varsity Club, '34, '35; Rural Life Club, '33, '34, '35; Manager, Football Team, '33, '34; Tennis Team, '34; Baseball, '35.

SENIOR CLASS



ADAMS, CARL
WOODBURY, TENNESSEE

Chemistry; Sigma Club, '34, Secretary, '35; Tennis Team, '34; Midlander Staff, '35.

ADAMS, MARY ELIZABETH
WOODBURY, TENNESSEE

English; Latin.

ADKISSON, DAVID FLINTOFF
ASHLAND CITY, TENNESSEE

History; Sigma Club; International Relations Club.

ALSUP, PEYTON
GLEADSVILLE, TENNESSEE

Mathematics; Rural Life Club, '33, '35, President, '34; Basketball, '34, '35; Varsity Club, '34, '35.

ANDERSON, MARTHA MIRIAM
MURKELSBORO, TENNESSEE

Physical Education; Health; Tau Omicron, '34, '35; Dramatic Club, '33, '34, '35; W. A. A., '35; Physical Education Medial, '35; Physical Education Club, '33, '34; Rural Life Club, '33, '34; International Relations Club, '33, '34.

BAGWELL, ANNE
DAYTONA BEACH, FLORIDA

English; Home Economics Club, '34; Physical Education Club, '32, '33.

BARKER, VIVA
DUNLAP, TENNESSEE

English; A. C. E., '34, '35; Rural Life Club, '32.

BARNETT, MARY WOODS
LEWISBURG, TENNESSEE

Biology; Rural Life, '31; Glee Club, '35; Y. W. C. A., '31, '35; Wohelo, '31.

BASHAM, MARGARET ADELINE
MURKELSBORO, TENNESSEE

Physical Education; Health; Rural Life Club, '32, '33, '34; Dramatic Club, '33, '34, '35; Physical Education Club, '33, '34; A. C. E., '35; Secretary-Treasurer, W. A. A., '35; Glee Club, '33, '34, Treasurer, '34, '35.

BEACHBOARD, JOSEPHINE
BELL BUCKLE, TENNESSEE

English; Tau Omicron; Y. W. C. A.; Library Club.

BENNETT, COLLEEN
DECHERD, TENNESSEE

English; History; Y. W. C. A., '31, '35; Home Economics Club, '32, '35; Rural Life, '31, '34; W. A. A., '35; Tau Omicron, '34; Student Council, '34, '35; M. S. A., '33, '34.

BINKLEY, GEORGE
GOODLETTSVILLE, TENNESSEE

Science; Class Basketball; Rural Life Club.

SENIOR CLASS

BOYD, MARY ELEANOR
CHATTANOOGA, TENNESSEE

Music: Band, '32, '33, '34, '35; Orchestra, '32, '33, '34, '35; Glee Club, '32, '33, '34, '35; Library Club, '34; Music Club, '33; Y. W. C. A., '32, '33, '34, '35.

BRAMBLETT, EMMA E.
HILLSBORO, TENNESSEE

Biology; Basketball, '31; Tennis, '31; Y. W. C. A., '32, '33.

BRAY, W. PRESTON
NASHVILLE, TENNESSEE

History; Dramatic Club.

BRANDON, N. WILFORD
DOVER, TENNESSEE

English; History; Writers' Club, '33, '34, '35; Dramatic Club, '33, '34; Editor, S. T. C. News, '34, '35; Editor, Midlander, '35; Rural Life Club, '33, '34.

CAMPBELL, MARY BENSON
HERMITAGE, TENNESSEE

Home Economics; English; Home Economics Club, '34, '35; Vice-President, '34, President, '35; Y. W. C. A., '34, Secretary, '35; Tau Omicron, '34, President, '35; Rural Life Club, '33; Science Club, '33.

CARLTON, ERLINE
EAGLEVILLE, TENNESSEE

English.

CARLTON, WILLIAM BLAKE, JR.
MURFREESBORO, TENNESSEE

English; Social Science; Science Club, '32, '33; Dramatic Club, '34, '35; Football, '32; President, Student Body, '35; Midlander Staff, '35.

CARROLL, CLAUDE, JR.
TULLAHOMA, TENNESSEE

Science; Basketball, '33, '34, '35; Cheer Leader, '34; Rural Life Club, '32, '33, '35; Science Club, '32, '33, '34, '35; Glee Club, '33; Physical Education Club, '33, '34; Midlander Staff, '35; Y. M. C. A., '32, '33, '34.

CLARK, DOROTHY
MURFREESBORO, TENNESSEE

Home Economics; English; Science Club, '33, '34; Home Economics Club, '32, '33, '34, Secretary, '35.

CLARK, LETITIA
MURFREESBORO, TENNESSEE

English; Home Economics; Home Economics Club, '32, '33, '34, '35; Science Club, '32.

COLEMAN, FRANCES KING
SMYRNA, TENNESSEE

English; Rural Life Club, '32, '35; Y. W. C. A., '32, '35.

CORLEW, DAISY ROOK
CHARLOTTE, TENNESSEE

Latin.



SENIOR CLASS



CORLEW, MARY ELIZABETH
CHARLOTTE, TENNESSEE

Latin; Mathematics.

COUCH, MARIE
MURFREESBORO, TENNESSEE

English.

DANIEL, PORTER L.
WAVERLY, TENNESSEE

History; Industrial Arts.

DOUGLAS, BETTY JANE
HARTSVILLE, TENNESSEE

English; Orchestra; Glee Club.

DOUGLAS, MARGARET ELEANOR
HARTSVILLE, TENNESSEE

Chemistry; Orchestra, '33, '34, '35; Band, '33, '34, '35;
Tau Omicron, '35; Music Club, '32.

EZELL, KENNETH
MURFREESBORO, TENNESSEE

Science; Basketball, '34, '35; Baseball, '35; Varsity
Club; Manager Football, '34; Rural Life Club, '33, '35;
David Lipscomb Club; Midlander Staff, '35.

FINNEY, ANDREW COLEMAN
MANCHESTER, TENNESSEE

History.

FLEMING, ARKLIE
CROSSVILLE, TENNESSEE

Social Science; History; Y. M. C. A., '33, '34, '35;
Glee Club, '33; International Relations Club, '34, '35.

FRANCIS, CLARENCE
MURFREESBORO, TENNESSEE

History; English; President, David Lipscomb Club, '35.

GAULT, THOMAS
FOUNTAIN CITY, TENNESSEE

Chemistry; Sigma Club, '35; Dramatic Club, '34, '35.

GENTRY, MARGARET ANNE
MURFREESBORO, TENNESSEE

French; English; Glee Club, '32, '34, Secretary, '35;
Band, '33, '35; Orchestra, '35; Pianist, B. S. U.,
'34, '35; Tau Omicron, '35.

GLASGOW, WILLIAM
ASHLAND CITY, TENNESSEE

Mathematics.

SENIOR CLASS

GOOD, DAISY

MURFREESBORO, TENNESSEE

History.

GOODMAN, HARRY

CORNERSVILLE, TENNESSEE

English; Biology; President, Y. M. C. A., '34; Sigma Club, Vice-President, '35; Vice-President, Rural Life Club, '35, Member, '31, '32, '33, '34.

GUSHERT, MARTHA A.

CHATTANOOGA, TENNESSEE

Home Economics; Home Economics Club, '34, '35; Y. W. C. A., '34, '35; Rural Life Club, '34, '35.

HAY, SAMUEL HUDSON

BIRMINGHAM, ALABAMA

English; History; Sigma Club, '33; President, Sigma Club, '34; Treasurer Junior Class, '34; Tennis Team, '34.

HAYNES, FULA IRENE

JASPER, TENNESSEE

Latin.

HAWKINS, HILDA HAZEL

MURFREESBORO, TENNESSEE

Social Science; English.

HICKS, JAMES

ENGLEWOOD, TENNESSEE

History; Basketball, '35; Rural Life Club, '34, '35; Varsity Club, '35.

HINES, JOHNNY

SHILBYVILLE, TENNESSEE

Chemistry; Social Science; Glee Club, '34, President, '35; Science Club, '34, '35; Rural Life Club, '34; Dramatic Club, '34, '35; Midlander Staff, '35; Y. M. C. A., '34, '35.

HOOVER, ELIZABETH

SMYRNA, TENNESSEE

Social Science; A. C. E., '34, '35; Rural Life Club, '33, '34; Glee Club, '35.

HOOVER, RUBY

MORRISON, TENNESSEE

English; A. C. E., '34, '35.

HUGHES, JOHN NEIL

MT. PLEASANT, TENNESSEE

History; Science Club; Cheer Leader, '33.

HUNTER, MARY CLIFTON

ANTIOCH, TENNESSEE

History; English; Y. W. C. A., '32, '33, '34, '35; Home Economics Club, '34, '35; Rural Life Club, '32, '33, '34, '35; Student Council, '34.



SENIOR CLASS



JAKES, MRS. VASHTI MANIER
EAGLEVILLE, TENNESSEE
Home Economics; Home Economics Club, '32, '33, '34,
'35; A. C. E., '34, '35; B. S. U., '35; Y. W. C. A., '35.



JOHNSON, HASTON
DUNLAP, TENNESSEE
English.



KOEN, SANKEY
NASHVILLE, TENNESSEE
Science; Glee Club.



LAWS, MRS. LAURA GRAHAM
LYNCHBURG, TENNESSEE
Home Economics; Home Economics Club.



LEDBETTER, TULA LEE
WILLOW GROVE, TENNESSEE
Mathematics; English.



LOKEY, JAMES
MURFREESBORO, TENNESSEE
Chemistry; Mathematics; Science Club, '32, '33; Presi-
dent, Science Club, '34, '35; Band, '31, '35, President,
'32, Vice-President, '33; Orchestra, '32, '33, '34, '35,
Secretary, '34; Rural Life Club, '32, '33, '34, '35.



LOVELL, LAURA CRAIG
MADISON, TENNESSEE
Home Economics; Home Economics Club, '34; Reporter,
'34, '35; Rural Life Club, '34, '35; A. C. E., '34,
'35; Science Club, '34, '35; Reporter, Y. W. C. A.,
'34, '35.



LYLE, ALICE WASHINGTON
CUMBERLAND CITY, TENNESSEE
English; Tau Omicron; Y. W. C. A.; Member, Student
Council; Glee Club; Rural Life Club.



MANKIN, JANE ELLEN
MURFREESBORO, TENNESSEE
Latin; English; Dramatic Club, '32, '34, '35, Vice-Presi-
dent, '31; Program Chairman, '35; Writers' Club, '32,
Secretary, '33, '34, President, '35; Associate Editor,
Midlander, '35.



McFADDEN, ANNA
MURFREESBORO, TENNESSEE
English.



MERRIMAN, MARY LEE
ETHRIDGE, TENNESSEE
English; History.

SENIOR CLASS

MIDDLETON, ALBERT E.

NEW BRITAIN, CONNECTICUT

Science; Sigma Club, '35; Assistant Football Coach, '34.

MITCHELL, MAUDE

WOODBURY, TENNESSEE

Home Economics; English; Home Economics Club, '35.

MOFFITT, GENTRY

McMINNVILLE, TENNESSEE

Biology.

MOORE, RHODA LEE

CHATTANOOGA, TENNESSEE

Music; Band, '32, '33, '34, President, '35; Orchestra, '32, '33, Secretary and Treasurer, '34, '35; Rural Life Club, '32, '33, '34, '35; Library Club, '34; Music Club, '32; Y. W. C. A., '32, '33.

OVERBEY, WILLIAM

FRANKLIN, TENNESSEE

Mathematics; Football, '34.

OWEN, HOYTE

READYVILLE, TENNESSEE

Social Science; Football, '31, '32, '33, '34; Baseball, '35; Varsity Club.

PARKER, S. AUBREY

MANCHESTER, TENNESSEE

History; Acrobatic Team, '31, '32; Physical Education Club, '31, '32, '33, '34.

PARSONS, HUGH

COLUMBIA, TENNESSEE

Social Science.

POTTS, GLADYS

SMYRNA, TENNESSEE

French.

REEVES, SARA DAVID

MURFREESBORO, TENNESSEE

Physical Education; English; Physical Education Club, '31, '32, '33; Rural Life Club, '32, '33, '34, '35; Science Club, '32, '33.

REED, ALLIENE

MURFREESBORO, TENNESSEE

Home Economics; Home Economics Club.



SENIOR CLASS



REEVES, MRS. W. E.
MURKESBORO, TENNESSEE

History.



RICHARDS, MRS. CLYDE E.
WOODBURY, TENNESSEE

English.



ROBERTS, PAULINE
CHATTANOOGA, TENNESSEE
Biology; Chemistry; Science Club, '32, '33, '34; Rural Life Club, '33, '34; A. C. E., '34, '35; Vice-President, Glee Club, '34, '35.



ROE, AUDREY
SPRINGFIELD, TENNESSEE
Science; W. A. A., '35; Y. W. C. A., '33, '34, '35; Rural Life Club, '33, '34, Vice-President, '35; Science Club, '33, '34, '35; Physical Education Club, '33, '34; Football Sponsor, '35.



SANDS, GRAY DUDLEY
OLD HICKORY, TENNESSEE
Science; Football, '31, '32, '33, '34; Basketball, '31, '32, '33; Vice-President, Junior Class, '34; Rural Life Club; Varsity Club, '32, '33, '34; Secretary-Treasurer, Varsity Club, '34.



SANDERS, MARGUFRITE DOUGLASS
RUSSELLVILLE, ALABAMA
English; History.



SAWYER, MARIETTA
MURKESBORO, TENNESSEE
Home Economics; English; Treasurer, Home Economics Club, '35; Rural Life Club, '32, '33.



SCOTT, LUCILLE
ROCKVALE, TENNESSEE
Biology; Physical Education; W. A. A., '35; Physical Education Club, '34.



SHARPE, GEORGE
Mt. Pleasant, Tennessee
Social Science, English; Football, '31, '32, '33, '34; Basketball, '31, '32; Rural Life Club, '31, '32, '33, '34; Dramatic Club, '32, '33; Varsity Club, '32, '33, '34.



SHARP, WILSON
FLAT WOODS, TENNESSEE
History; Rural Life Club, '32; Basketball, '32, '33.

SENIOR CLASS

SHELTON, LON

BELCH GROVE, TENNESSEE

History; Sigma Club, '35.



SMITH, BESSIE BYRNE
MURFREESBORO, TENNESSEE

English.



SMITH, ELIZABETH
CHATTANOOGA, TENNESSEE

English.



SNEED, DELLA LOUISE
NORMANDY, TENNESSEE

English; Dramatic Club; Glee Club.



SNELL, AZILEE O.
MURFREESBORO, TENNESSEE

Social Science; A. C. E., '34, '35; Rural Life Club, '34; Y. W. C. A., '34.



SORY, MARY ELIZABETH
CEDAR HILL, TENNESSEE

English; Rural Life Club, '34, '35; Y. W. C. A., '34, '35; Tennis Team, '34, '35; W. A. A., '35.



SPRINGER, SETH
WEST POINT, TENNESSEE

Industrial Arts; Baseball, '27, '28; Rural Life Club, '30, '31; Y. M. C. A., '30, '31.



STEGALL, MAY LOVE
ROCKVALE, TENNESSEE

Home Economics; Home Economics Club, '32, '33, '34, Vice-President, '35; Physical Education Club, '32, '33, '34; W. A. A., '35.



STROOP, CHRISTINE
MURFREESBORO, TENNESSEE

English; French; Writers' Club, '32, '33, '34, '35; Dramatic Club, '34, '35; A. C. E., '34.



SUMMAR, W. C.
SMITHVILLE, TENNESSEE

Social Science; Glee Club, '34; Vice-President, Y. M. C. A., '33, '34; President, B. S. U., '34, '35; International Relations Club, '34; Secretary-Treasurer, Debating Club, '34, '35.



SENIOR CLASS



TAYLOR, JAMES
FOSTERVILLE, TENNESSEE
History; Chemistry; Sigma Club.



THOMAS, ERVIN H.
CORNERSVILLE, TENNESSEE
Science.



THOMAS, MARIE
HARTSVILLE, TENNESSEE
Home Economics; Home Economics Club, '31, '32, '35, '35; Rural Life Club, '31, '32, Secretary, '33; Science Club, '32, '33; Y. W. C. A., '33.



TRAPP, ETTA
SMITHVILLE, TENNESSEE
History; English; Y. W. C. A., '34, '35; Debating Club, '34, '35, Secretary, '34, Vice-President, '35; International Relations Club, '34, '35, Reporter, '34, Secretary-Treasurer, '35; Readers' Club, '35; Writers' Club, '34, '35.



WALKER, MARY LOUISE
NASHVILLE, TENNESSEE
Mathematics; Social Science; B. S. U., '34; State B. S. U., Secretary, '34, '35; Assistant Editor, Freshet, '32.



WALKER, NELLE
JINGO, TENNESSEE
Biology; Home Economics Club, '33, '34, '35.



WALLACE, JOE
OLD HICKORY, TENNESSEE
Science; Football, '31, '32, '33; Varsity Club, '33, '34, '35; Rural Life Club, '32, '33, '34; President, Sophomore Class, '33.



WILLIS, WYLIE
WEST POINT, TENNESSEE
Science; Science Club, '34.



WINN, ANNA LOUISA
CLARKSVILLE, TENNESSEE
Mathematics; Social Science; Dramatic Club, '34, '35, Orchestra, '35, Band, '35; International Relations Club, '35; Rural Life Club, '34, '35.



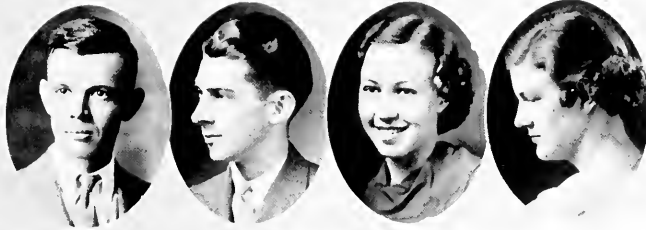
WOOD, MARY CLARA
WOODBURY, TENNESSEE
English.



COUSER, MEVOLLENE
TULLAHOMA, TENNESSEE
Social Science; Rural Life Club, '31, '32, '33, Vice-President, '34.



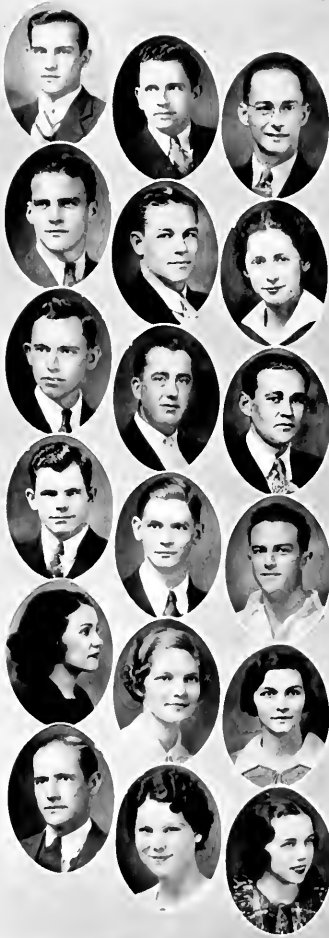
GOFORTH, A. T. D.
TRACY CITY, TENNESSEE
Biology, Chemistry; Science Club, '32.



OFFICERS OF JUNIOR CLASS

HORACE JONES	<i>Sponsor</i>
JOHN HOLLOWAY	<i>President</i>
MURFREESBORO, TENNESSEE	
VERNA MAI ELLIS	<i>Vice-President</i>
NASHVILLE, TENNESSEE	
SARA GEORGE VENABLE	<i>Secretary-Treasurer</i>
ATLANTA, GEORGIA	

JUNIOR CLASS



ABERNATHY, JACK Murfreesboro, Tenn.
 ABERNATHY, SPEER Murfreesboro, Tenn.
 ALLEN, EDMUND B., JR. Murfreesboro, Tenn.

ANDERSON, MAURICE Murfreesboro, Tenn.
 BEASLEY, HARTWELL..... Triune, Tenn.
 BELL, MARTHA Springfield, Tenn.

BETTY, LESTER Tennessee City, Tenn.
 BROADWAY, ANDREW Lobelville, Tenn.
 CAMPBELL, CARL..... McMinnville, Tenn.

CLAYTON, RALPH B..... Memphis, Tenn.
 COLEMAN, WOODROW Nashville, Tenn.
 COLLINS, WILLIAM Pulaski, Tenn.

COOK, MAYME Murfreesboro, Tenn.
 COOPER, MARTHA Cowan, Tenn.
 DAVIS, BULEAH Cornersville, Tenn.

DANIEL, IRA Murfreesboro, Tenn.
 ELLIOTT, VERA MAE Manchester, Tenn.
 EDWARDS, JULIA Bell Buckle, Tenn.

JUNIOR CLASS

EDWARDS, JOHNNIE
FIELD, MARY
FULLER, SARA BOONE

Lewisburg, Tenn.
Centerville, Tenn.
Sale Creek, Tenn.

FAITH, ETHELYN
GOWER, LOUISE
HASKINS, REBECCA

Madison, Tenn.
Springfield, Tenn.
Springfield, Tenn.

HITT, ROBERT M.
HOLCOMB, JUNE
HOOVER, JOHN

Murfreesboro, Tenn.
McMinnville, Tenn.
Smyrna, Tenn.

JACKSON, J. W.
JACKSON, LESTER
JOHNS, D. B.

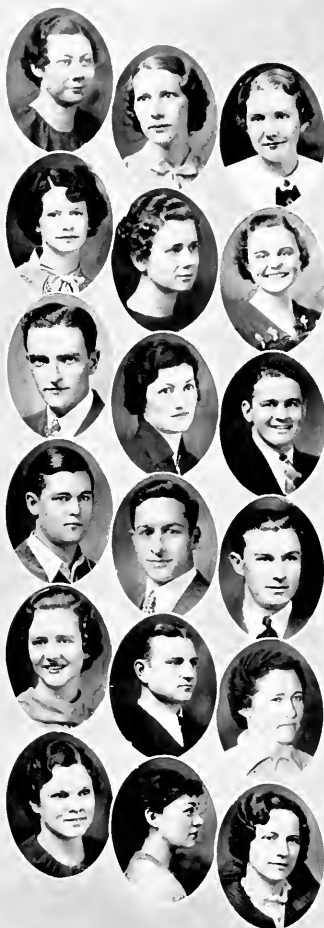
Murfreesboro, Tenn.
Old Hickory, Tenn.
Murfreesboro, Tenn.

JOHNSON, FRANCES
KESSLER, HENRY G.
LOWE, PEARL

Watertown, Tenn.
Loretto, Tenn.
Rockvale, Tenn.

LOWRY, OUIDA
MAJOR, MILDRED
MANOR, CLARA

Pembroke, N. C.
Chattanooga, Tenn.
Waverly, Tenn.



JUNIOR CLASS



MASON, ROBERT Woodbury, Tenn.
 MEADOWS, EVELYN Manchester, Tenn.
 MOORE, AVIS Murfreesboro, Tenn.

MOORE, NELLIE Belvidere, Tenn.
 MORAN, MARY JOE Franklin, Tenn.
 MURPHY, ROBERT, JR. Murfreesboro, Tenn.

MCGLEAREN, ELIZABETH Centerville, Tenn.
 MCDANIELS, RUTH Chattanooga, Tenn.
 NICHOLS, EDWARD C. Mt. Pleasant, Tenn.

PATT, LEE Murfreesboro, Tenn.
 PITTARD, HOMER Murfreesboro, Tenn.
 PITTS, RAYMOND Murfreesboro, Tenn.

POTTS, MARTHA E. Smyrna, Tenn.
 POWERS, LOUIS Denver, Tenn.
 RIDING, MORSE L. Joelton, Tenn.

RING, SALLIE MAY Belfast, Tenn.
 ROBINSON, CLAUDE Christiana, Tenn.
 ROSSON, LULA Nashville, Tenn.

JUNIOR CLASS

SARVER, CHARLES Hendersonville, Tenn.
 SCOTT, WILLIAM OWEN Rockvale, Tenn.
 SIMMONS, EVANS Hillsboro, Tenn.

SHASTEEN, MINNIE O. Fayetteville, Tenn.
 SIMS, JANICE Christiana, Tenn.
 STARBUCK, VIRGINIA Linden, Tenn.

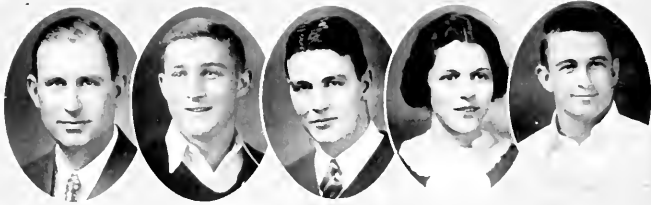
WADE, IDABELLE Murfreesboro, Tenn.
 WALKER, MARY ELIZABETH Chattanooga, Tenn.
 WARREN, EDWARD Franklin, Tenn.

WHEELER, CHARLES Murfreesboro, Tenn.
 WHEELER, EVELYN Mt. Pleasant, Tenn.
 WILLIAMS, ANNIE ELIZABETH Guyton, Okla.

WILSON, ROBERT Murfreesboro, Tenn.
 WISER, JESSE Wartrace, Tenn.
 WOODYARD, MRS. AMY B. Greenfield, Tenn.

WOODWARD, SARA Lewisburg, Tenn.
 WRIGHT, MARGARET Murfreesboro, Tenn.





OFFICERS OF SOPHOMORE CLASS

DR. A. A. O'KELLY		<i>Sponsor</i>
GRANVILLE WAGGONER	NASHVILLE, TENNESSEE	<i>President</i>
ROBERT BASS	NASHVILLE, TENNESSEE	<i>Vice-President</i>
FRANCES NICHOLSON	ASHLAND CITY, TENNESSEE	<i>Secretary</i>
EDWARD HEFSEY	NASHVILLE, TENNESSEE	<i>Treasurer</i>

SOPHOMORE CLASS

ALEXANDER, RUTH Thompsons Station, Tenn.
 BARNES, BILLIE Bakewell, Tenn.
 BAXTER, PAULINE Lawrenceburg, Tenn.

BEARD, MARY ALICE Clifton, Tenn.
 BENNETT, W. L. Eagleville, Tenn.
 BLANKENSHIP, CHARLES Murfreesboro, Tenn.

BOSTELMAN, MARTHA Joelton, Tenn.
 BRATCHER, LETRESS Daylight, Tenn.
 BUCHANAN, RUFUS Murfreesboro, Tenn.

BROWN, ELIZABETH Pikeville, Tenn.
 BROWN, WILSON Murfreesboro, Tenn.
 BURKS, HILDA Chattanooga, Tenn.

CARVER, DAVID Nashville, Tenn.
 CARNAHAN, ELDON Murfreesboro, Tenn.
 CLARK, RACHEL Murfreesboro, Tenn.

CLINARD, BESS ALICE Springfield, Tenn.
 COLEMAN, EARL Smyrna, Tenn.
 COPPINGER, KATHERINE Sale Creek, Tenn.

CAPPS, MARTHA WILSON Waverly, Tenn.
 COTHRAN, LUCILLE Hartsville, Tenn.
 DICKSON, OPAL Donelson, Tenn.

DOWLEN, EWELL Nashville, Tenn.



SOPHOMORE CLASS



DOWNEY, VIRGINIA Huntland, Tenn.
 EARTHMAN, MARTHA Murfreesboro, Tenn.
 EZELL, FREDERICK Murfreesboro, Tenn.

FLURY, SAMMIE Tracy City, Tenn.
 FORRESTER, CHARLES Jasper, Tenn.
 GILLIAM, LELL Pelham, Tenn.

GOFORTH, A. T. D. Tracy City, Tenn.
 GONCE, CLFO Beech Grove, Tenn.
 GRACY, MARTHA MOORE ... Murfreesboro, Tenn.

GRAHAM, ELIZABETH ... College Grove, Tenn.
 GREEN, MYRA Shelbyville, Tenn.
 HARPER, ROBERT Nashville, Tenn.

HINES, RUTH Shelbyville, Tenn.
 HURT, MILDRED Chapel Hill, Tenn.
 INGRAM, FREIDA Culleoka, Tenn.

JACKSON, ANDREW TODD ... Murfreesboro, Tenn.
 JAMES, EDNA Murfreesboro, Tenn.
 JENNINGS, ERLINE Milton, Tenn.

JONES, RACHEL Chapel Hill, Tenn.
 KEITH, NELLE Huntland, Tenn.
 KLMP, CAMILLA Lafayette, Tenn.

KENNIDY, THELMA South Pittsburg, Tenn.
 KIDD, MABEL Fayetteville, Tenn.

SOPHOMORE CLASS

LOVE, FOUNT Rockvale, Tenn.
 MAJOR, WILL EARL Lebanon, Tenn.
 MALONE, PAULINE Dowelltown, Tenn.

MARTIN, LILLIAN Sale Creek, Tenn.
 McCASLIN, FLORENCE Nashville, Tenn.
 McGEHEE, CLOFTON Fayetteville, Tenn.

MERRIMAN, ELIZABETH Waynesboro, Tenn.
 MIMS, BROWN Ardmore, Tenn.
 MIMS, ELIZABETH Ardmore, Tenn.

MOFFITT, LOUISE McMinnville, Tenn.
 MULLINS, GENE Murfreesboro, Tenn.
 NEWMAN, HARRY E. Englewood, Tenn.

NEWMAN, SHAD Englewood, Tenn.
 OAKLEY, FRANCES Overall, Tenn.
 O'BRIEN, DONALD Murfreesboro, Tenn.

PARKER, ALLIE E. Flatreck, Tenn.
 PARKS, RUBY Spring Hill, Tenn.
 REEDY, ELNA Minor Hill, Tenn.

RILEY, ODA Joelton, Tenn.
 ROBERTSON, JAMES Taft, Tenn.
 ROGERS, FRANCES Murfreesboro, Tenn.

SHIPP, MOZELLE Lebanon, Tenn.
 SHOFFNER, FRANCES Shelbyville, Tenn.



SOPHOMORE CLASS



SIMPKINS, MARTHA Springfield, Tenn.
 SIMS, JOHN Wartrace, Tenn.
 SMITH, CHARLES McMinnville, Tenn.

SMITH, HAZEL Watertown, Tenn.
 SMITH, WATT Murfreesboro, Tenn.
 STEGALL, WHITNEY Rockvale, Tenn.

STONE, MILDRED Lafayette, Tenn.
 SUMMAR, WILSON Smithville, Tenn.
 SWIFT, WILLIAM Algood, Tenn.

TAFT, THERESA Spencer, Tenn.
 TAILANT, DOROTHY Chattanooga, Tenn.
 THOMAS, ERNEST Hartsville, Tenn.

TUCKER, J. T. Morrison, Tenn.
 VANCE, HELEN Hartsville, Tenn.
 WARREN, ALGA LUCILLE Linden, Tenn.

WATKINS, MARJORIE Nashville, Tenn.
 WEBB, CECIL Nashville, Tenn.
 WEBB, RUTH Smithville, Tenn.

WHELFER, FRANCES Antioch, Tenn.
 WHITLEY, ROSA Morristown, Tenn.
 WILLIAMS, THELMA Hixson, Tenn.

WINNITT, MILDRED Morrison, Tenn.
 WINSTLAD, DeALVA INEZ Walling, Tenn.



OFFICERS OF FRESHMAN CLASS

N. C. BEASLEY

Sponsor

CHARLES MURPHY

NASHVILLE, TENNESSEE

President

VIRGINIA WILKINSON

CORNERSVILLE, TENNESSEE

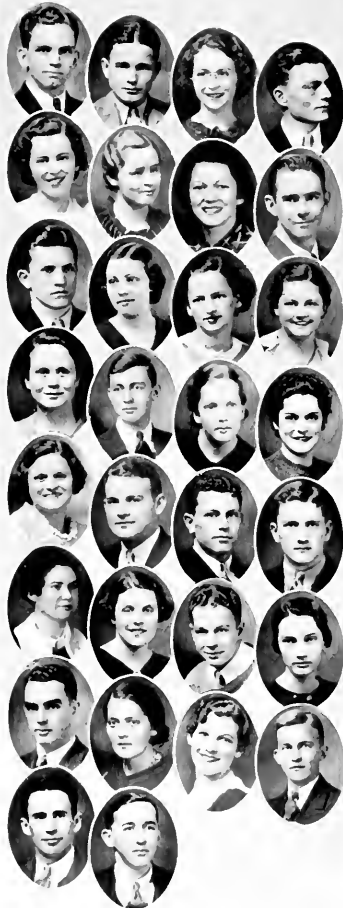
Secretary

JOE NETHERLAND

MURFISBORO, TENNESSEE

Treasurer

FRESHMAN CLASS



ADAMS, JOHN H. Columbia, Tenn.
 ADCOCK, ELOY Wartrace, Tenn.
 ALLEN, SARA BELLE Murfreesboro, Tenn.
 ASHLEY, JOE, JR. Beech Grove, Tenn.

AVERITT, LILA Erin, Tenn.
 BAKER, BETTY Birchwood, Tenn.
 BARKER, LOIS Jasper, Tenn.
 BARRETT, MALCOM Walter Hill, Tenn.

BASKIN, ROBERT Murfreesboro, Tenn.
 BASS, ALWILDA Columbia, Tenn.
 BAXTER, PAULINE Lawrenceburg, Tenn.
 BEASLEY, THELMA Franklin, Tenn.

BOYLES, DAISY White House, Tenn.
 BRAMBLETT, ROBERT Hillsboro, Tenn.
 BROWN, FRANCES Graham, Tenn.
 BROWN, GLADYS Palmer, Tenn.

BROWNING, ELIZABETH Milan, Tenn.
 BRYANT, BARRY Memphis, Tenn.
 CAMPBELL, CLARENCE Rockvale, Tenn.
 CARLTON, JOHN Eagleville, Tenn.

CLINARD, KATHERINE Springfield, Tenn.
 COBLE, JENNIE MAYE Decherd, Tenn.
 CUMMINGS, HAROLD Nashville, Tenn.
 De FRIESE, MARIE Birchwood, Tenn.

DERRYBERRY, ROY Lewisburg, Tenn.
 DODSON, MINNIE Sparta, Tenn.
 DRYE, LUCILLE Nashville, Tenn.
 DUNCAN, BOYD Hillsboro, Tenn.

DUNN, ALIEN Kingston Springs, Tenn.
 LALY, RIDDERS Hazel Green, Ala.

FRESHMAN CLASS

EARTHMAN, ELLEN Murfreesboro, Tenn.
 ELDER, KATHLEEN Manchester, Tenn.
 ELLEDGE, TENNYE FRANCES Woodbury, Tenn.
 ELMORE, LEFFEL Bethpage, Tenn.

ERWIN, GLADYS White House, Tenn.
 FERRELL, DAVID Murfreesboro, Tenn.
 FINNEY, F. B. Winchester, Tenn.
 FLURY, MARIE Tracy City, Tenn.

FORBES, FRANCES Ardmore, Tenn.
 FORGY, TREVA Cowan, Tenn.
 FREEMAN, MARTHA Gallatin, Tenn.
 FULLER, SARA LU Cumberland City, Tenn.

GALLIAN, CORNELIA Appleton, Tenn.
 FYKES, CARLINE Westmoreland, Tenn.
 GARANT, RICHARD Murfreesboro, Tenn.
 GARNER, JAMES Pulaski, Tenn.

GARNER, THELMA Decherd, Tenn.
 GIPSON, LANNY Decherd, Tenn.
 GOODALL, DOROTHY Lebanon, Tenn.
 GRAY, MARTHA Lewisburg, Tenn.

GREEN, JAMES Murfreesboro, Tenn.
 GREEN, THOMAS Shelbyville, Tenn.
 GWIN, MARY ALICE Hartsville, Tenn.
 HALL, DOROTHY Hartsville, Tenn.

HAMBLÉN, JAMES Nashville, Tenn.
 HAMBRICK, JOHN Lewisburg, Tenn.
 HAMPTON, SARA Fayetteville, Tenn.
 HARDISON, ANGELYNE Columbia, Tenn.

HAUBENREICH, ALBERT Decherd, Tenn.
 HENLEY, SAM Decherd, Tenn.



FRESHMAN CLASS



HEWGLEY, THOMAS Nashville, Tenn.
 HINDMAN, HAZEL Tracy City, Tenn.
 HODGE, RUTH Arrington, Tenn.
 HOLMES, WILMA McMinnville, Tenn.

HOLLOWAY, ERLINE Walter Hill, Tenn.
 HOOKER, EDGAR REED Smithville, Tenn.
 HOOVER, WELTON Bell Buckle, Tenn.
 HOOVER, WILLIAM Snyrna, Tenn.

JOHNS, HASCAL Walter Hill, Tenn.
 KEMMER, OLA Grassy Cove, Tenn.
 KENNON, EMMETT Nashville, Tenn.
 KING, MRS. ELSIE Linden, Tenn.

KIRBY, MARY AGNES Hartsville, Tenn.
 KOONS, AVINI Chattanooga, Tenn.
 LANDERS, HAYDEN Chattanooga, Tenn.
 LANE, ROBERT Nashville, Tenn.

LAWSON, INA BLANCHE Pikeville, Tenn.
 LAWSON, VIRGINIA Liberty, Tenn.
 LITTLE, CORNELIA Pikeville, Tenn.
 MCBRIDE, ANNIE RUTH Manchester, Tenn.

McGAVOCK, MARY MANN Columbia, Tenn.
 McGEHEE, LUCILE Elora, Tenn.
 McINTYRE, EVERETT Nashville, Tenn.
 McMAHON, RACHEL Nolensville, Tenn.

McRAE, JEAN Nashville, Tenn.
 McRAE, LUCILLI Nashville, Tenn.
 MAJOR, KATHRINE Lebanon, Tenn.
 MALONE, MILDRED Murfreesboro, Tenn.

MAHONY, WILL T. Watertown, Tenn.
 MARGARET Murfreesboro, Tenn.
 MASON, ABE Woodbury, Tenn.

FRESHMAN CLASS

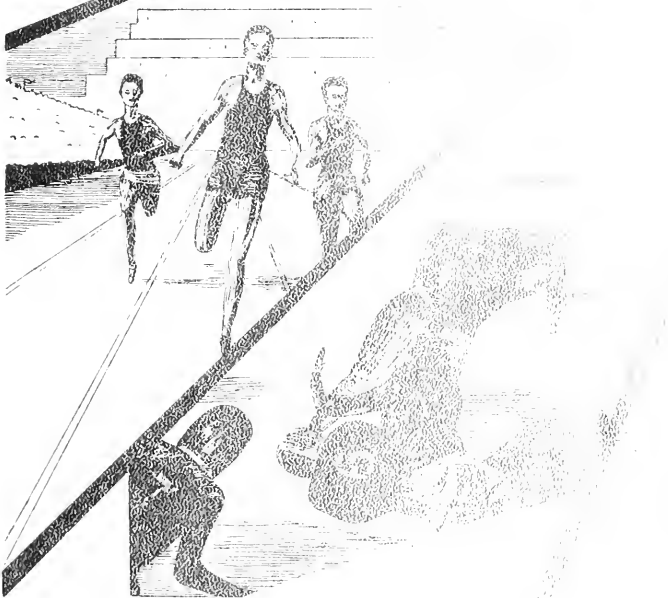
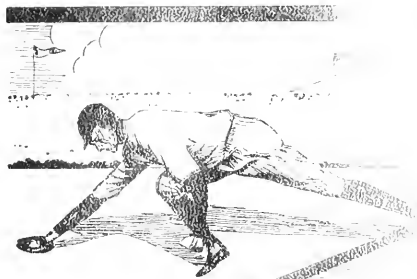
MILLER, ALLEN	Rockvale, Tenn.
MATTHEWS, JANIE	Lynnville, Tenn.
MESSICK, MOZELLE	Christiana, Tenn.
MORRIS, SARA EMMA	Springfield, Tenn.
MORTON, ELOISE	Nashville, Tenn.
NEIL, BETTY	Nashville, Tenn.
NEWMAN, NELLIE	Englewood, Tenn.
NEWMAN, MRS. HARRY	Etowah, Tenn.
NORVILLE, WARDINE	Manchester, Tenn.
NOWLIN, ELIZA ANN	Wartrace, Tenn.
OGLES, MARY	Christiana, Tenn.
OLDHAM, GORDON	Pleasant Shade, Tenn.
OVERALL, BLAKEMORE	Liberty, Tenn.
PARKER, VELIE	Bradyville, Tenn.
PATTON, MINNIE K.	College Grove, Tenn.
PITCOCK, ZELMA	Fayetteville, Tenn.
PUCKETT, NAT	Eagleville, Tenn.
QUARLES, FRANCES	Cowan, Tenn.
RANSOM, MARY	Nashville, Tenn.
REYNOLDS, MELVILLE	Duncan, Okla.
RIGNEY, OZELLE	Summitville, Tenn.
RIGNEY, PAULETTE	Summitville, Tenn.
ROARK, ROBERT D.	Westmoreland, Tenn.
ROGERS, OCTAVIA	Murfreesboro, Tenn.
RUMMANS, WILL D.	Madison, Tenn.
RUSS, JOHN G.	Clifton, Tenn.
SADLER, MERNA	Christiana, Tenn.
SCHARDT, CHARLES	St. Louis, Mo.
SEAY, ROBERT	Nashville, Tenn.
SEWART, HAROLD	Murfreesboro, Tenn.
SHAPARD, JEAN	Shelbyville, Tenn.



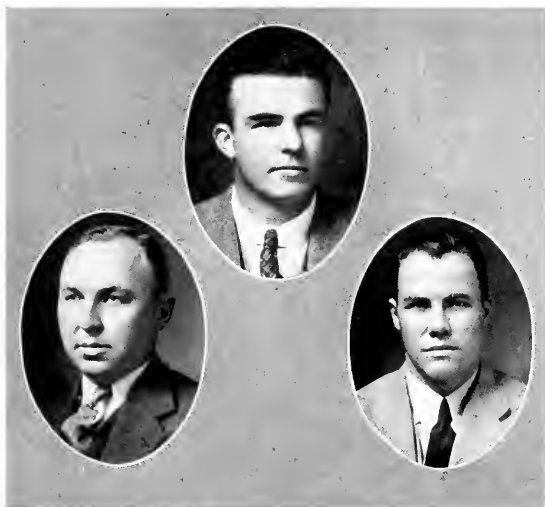
FRESHMAN CLASS



- | | |
|-----------------------|--------------------------|
| SHARP, MARGARET | Nashville, Tenn. |
| SHELTON, BERTHA | Beech Grove, Tenn. |
| STONE, WILMA | Lafayette, Tenn. |
| SMITH, CARTER | Ardmore, Tenn. |
| SMITH, JAMES T. | McMinville, Tenn. |
| SMITH, MARY | Helena, Tenn. |
| SMOTHERMAN, HERMINE | Murfreesboro, Tenn. |
| SMITHERMAN, WOODY | Bessemer, Ala. |
| SMOTHERMAN, GAYNELL | Murfreesboro, Tenn. |
| STAMMER, JAMES | Chapel Hill, Tenn. |
| SPENCER, IDA | Lynchburg, Tenn. |
| STEWART, PANGLE | Fayetteville, Tenn. |
| STOREY, BEATRICE | Frankewing, Tenn. |
| STRICKLIN, LERA | Lawrenceburg, Tenn. |
| STONE, MARY KATHERINE | Viola, Tenn. |
| SULLIVAN, ELIZABETH | Eagleville, Tenn. |
| SWENEY, FRANCES | Nashville, Tenn. |
| THOMPSON, CLEMENTIA | Gallatin, Tenn. |
| TRAPP, FRANCES | Ethridge, Tenn. |
| TUCKER, TOM, JR. | Lafayette, Tenn. |
| TURMAN, LILLIAN | Waynesboro, Tenn. |
| TURNY, HARRY | Milton, Tenn. |
| UMBAUGH, MARY FRANCES | Winchester, Tenn. |
| WAITS, MAURICE | Minor Hill, Tenn. |
| WEST, MADGE | Brewstertown, Tenn. |
| WILKINSON, REBECCA | Cornersville, Tenn. |
| WILLIAMS, ALMA | Thompsons Station, Tenn. |
| WISER, CLIFTON | Wartrace, Tenn. |
| WISER, ELDRED | Wartrace, Tenn. |
| WRIGHT, MITCHELL | Cornersville, Tenn. |
| YOUNG, BILL | Orme, Tenn. |
| TURRINTINI, NINA | Shelbyville, Tenn. |



ATHLETIC



NOOBY FREEMAN

E. M. WALLER

AL MIDDLETON

COACHES

● Coach Waller finished his second year at S. T. C. this season. Beseet with the difficulties of introducing a new system, and the scarcity of material, he has worked quietly and efficiently towards the development of a winning combine. That, perhaps, is the keynote to his coaching tactics, the quietness and smoothness with which he accepts both defeat and victory. His is a creed of sportsmanship, and football for the fun of the game. His philosophy is right. His knowledge of fundamentals is far-reaching. With those things, and with the class of material now present, the team should do great things in the seasons to come.

● Al came to us from the University of Tennessee last year. He entered school as a Junior and helped coach the yearlings. This year he is a Senior and was Assistant Varsity Coach. Al knows football and how to put it across. He is liked by the boys and was a real help in molding a smoothly working combine. He is leaving us this year, and we wish him success wherever he may be.

● Coach Freeman came here as a Freshman Coach this year. He is a former student and athlete of S. T. C. and knows the spirit well. He had plenty of good material this year and handled it to good advantage. Many of his proteges will be good Varsity material next year. He is liked by the boys both on the athletic field and in the shop where he teaches Industrial Arts.

FOOTBALL INDIVIDUALS



CAPTAIN BUCK EDWARDS

Tackle

Buck was captain of the team this year and a good inspiration to the team. He was a good sport and a hard fighter. One might be able to get him down, but not keep him there. This was Buck's last year, and he left school to become a victim of matrimony.

"RED" OWEN

Halfback

"Red," a fast-running back, closed his career as a college athlete this year. He has done many things on the field of battle since he has been at S. T. C. "Red" is a good sport and will be missed next year.

GEORGE SHARPE

Center

George was outstanding in the line this year. He played the pivot position with the skill of an experienced hand. This is George's last year, and we regret to see him leave. He will be missed when November comes.

HOMER PITTARD

Tackle

Homer, the largest man on the squad, gave trouble when anything tried to go over his side of the line. He was never seen down and was always the fifth man in the opposition's backfield. Homer has one more year, and much is expected from him.



FOOTBALL INDIVIDUALS

TODD JACKSON

Guard

Although out of school a year, he came back this year, playing an excellent game of ball. He is a thorn in the opponent's flesh and can always be counted on to smash his portion of the line. He has two more years to play.

ED "SQUAT" HESSEY

Quarterback

In spite of being the smallest man on the squad, he is considered the smartest. He can run a team, use his head, and also use his foot. He is a quick punter and an accurate one. Ed has two more years to do brain work in football.



GRAY SANDS

Fullback

Gray is a Senior and has played four years. In spite of a knee which has slowed him down, he is a hard-driving, line-plowing back. He is also a good defensive man and has been very valuable every year here.

CLOFTON McGEHEE

End

Mac entered school last year after football season. He became eligible for Varsity ball last fall. He was a regular end and played a good game in many ways. He is a good sport, a consistent scrapper, and a hard player. Mas has two more years to play.

FOOTBALL INDIVIDUALS



MYLES BASKIN

Fullback

Myles is a hard-driving, blocking, tackling Sophomore. He has two more years and will accomplish much in this length of time. He is an exceptionally good defensive man and can carry the ball excellently well. Watch him in the seasons to come.

CHARLES "STUMPY" SARVER

Guard

"Stumpy" is a good guard, although he was shifted to backfield last year. This year he returned to his old position and played it well. He has one more year to play and can be counted on to do his part. "Stumpy" is dependable.

EVANS "BURR" SIMMONS

Halfback

"Burr" is a good defensive and blocking back. He can carry a ball when needed, but he is used more for his other qualities. He is little but loud, and the only way a man can be better than him is to be larger. He helps keep the team's spirits up with his cocksureness and bantering. He has one more year. Watch him.

LEE PATE

Quarterback

Lee was out of school last year and lost a lot of his old style, but he came back and played good ball. Before the season was over, he was back to his old style. He can punt, pass, and run, and has one more year to demonstrate his unusual ability.



FOOTBALL INDIVIDUALS

GRANVILLE "WAG" WAGGONER

Guard

"Wag" was converted from a back to a guard which proved to be a good change. He is a blocking, tackling, hard-butting, powerful man, playing a good game both as a guard and back. He is also a Sophomore and has prospects for his two best years yet.

HAMP THOMAS

Fullback

This is Hamp's first year to play here. He came up from another college, making him ineligible last year. He is a hard driver and good tackler, and we are counting on him to fill a place and plug holes on defense.



JAMES CARTER

End

Jimmie also entered last winter and became eligible for the Varsity. He is playing his first year this year. He played end and went back to punt occasionally. He is a good punter and can be counted on in a pinch. He has two more years and prospects of making an outstanding back.

JEAN BATTLE

Center

Jean is from Alabama, and, although a Junior, this is his first year to play here. His name well implies the type of game he plays, for he is a consistent fighter. He has one more year to play, which settles the center question for that duration of time.

BILL OVERBEY

Guard

Bill came here a Junior from Austin Peay. This is his second year. He is a strong cog in the fore wall, being a good sport and a consistent scrapper. This is Bill's last year, and he will be missed.



FOOTBALL INDIVIDUALS



HARTWELL BEASLEY

End

Hart was changed from a tackle to an end. His height and use of his hands helped him greatly. He played a sportsmanlike game, and put forth his best. Hart is a Junior with only one more year.

J. W. JACKSON

Tackle

J. W. is plenty large and a good fighter. He has had a bad knee, but is now in good shape. With two more years, he will develop into a good tackle and prove invaluable to the team.

JOHN HOOVER

Halfback

John is a Junior with one more year of service. He is a fast and very elusive back. With one more year to play he will prove to be a desirable asset. He is a good sport and has plenty of what it takes.

JEFF HARLAN

Halfback

Is he fast? Maybe not, but at least he can carry a ball at a high rate of speed. He is a speedy, elusive back with plenty of "intestinal fortitude" and will to go. He gained plenty of yards this year by sweeping the ends wide. He is another of the group of Sophomores.

JIMMIE NORTON

Manager

Jimmie has plenty of managerial ability and knows how to use it. He can tape an injury and find what is needed from the storeroom. His jovial manner and wisecracks helped the team many times when that was what they needed. As a manager, he was there with the goods.





Varsity Football Squad

First Row—Bill Overbey, Gray Sands, George Sharpe, Buck Edwards (captain), and "Red" Owen.

Second Row—"Jeff" Harlan, Raymond Pitts, Hartwell Beasley, Charles Sarver, Hamp Thomas, Lee Pate, and Todd Jackson.

Third Row—Kenneth Ezell (assistant manager), Ed Hessey, Granville Waggoner, Jean Battle, John Hoover, Evans Simmons, Myles Baskin, Clofton McGehee, and Jimmie Norton (manager).

Fourth Row—Freeland Bennett, Homer Pittard, J. W. Jackson, and E. M. Waller (coach).



FRESHMAN FOOTBALL SQUAD

First Row—Roberts, Stewart, McIntyre, Seay, Smith, Hamblen, Summar, R. Simmons, Troop, Tucker, Puckett, Bryant, Hoover, Baskin, and Young.

Second Row—McClard, Pruitt, W. Simmons, Kennon, Dozier, Murphy, Coach Freeman, Hambrick, Swart, Wisser, and Lester.



FRESHMAN BASKETBALL SQUAD

First Row—Humpy Campbell, Nat Puckett, Shorty Campbell, Cliff Wiser, and Warner Simmons.

Second Row—Coach Nooby Freeman, Bubber Murphy, Jaybird Hamblen, Clarence Norman, Taylor Green, and John Hambrick.

BASKETBALL INDIVIDUALS



JIMMIE NORTON (Captain)

Guard

Jimmie is a Senior, and this is his second year of college ball. The first two years he was barred because of a bad knee. Jimmie is very deceptive and can handle the ball well. He can bring the ball down and is an excellent scorer, a good defensive man and a good sport. Jimmie will be lost for next year because of graduation.

FREELAND BENNETT

Guard

"Ox" is the mainstay of the team. A good guard and one that can take the ball off the backboard. He can also score when he goes under; but usually he keeps the opposition blocked from their goal. "Ox" has two more years, and much is expected of him.

PLYTON "SOUP" ALSUP

Center

"Soup" came here last year from Lipscomb. He has played two years and was an excellent asset to the team. A good center, a good floor man, and a good sport. He will be needed next year, but he also graduates.

EVANS "BURR" SIMMONS

Forward

"Burr" plays basketball just like he plays football. He puts himself into the game and goes hard. He helps keep spirits up and can talk the opposition out of scoring. He works the floor well, both a good defensive and offensive man. "Burr" has one more year and will do his best.



BASKETBALL INDIVIDUALS

KENNETH EZELL

Guard

Kenneth is a Senior and has only played two years; however, he played good ball those two years. Kenneth is a good guard and a scoring threat at all times and positions. He can make baskets from places unknown by many. Kenneth will be lost by graduation.

JAMES "SALLY" HICKS

Forward

"Sally" came here as a Junior and was ineligible his first year. He is a Senior this year. "Sally" plays an aggressive game and is a good scorer. Many games he went in and made his portion—a good sport and a good man to play with, "Sally" will be missed next year.



JOE WALLACE

Forward

This was Joe's fourth year of basketball, but at the first of the season the doctor gave orders not to play. Joe is a smooth floor man and a consistent one. He could be counted on for points and cooperation. It was regretted that Joe could not play the whole season.

LEONARD "LUKEY" MANSFIELD

Forward

"Luke" has an unusual style of deception. He can make baskets that seem incredible. His deception is so good that he sometimes fools himself. A good floor man, a scorer, and a good sport. One more year is all he has, and he will be used plenty.



VARSITY BASKETBALL SQUAD

First Row—Coach E. M. Waller, Joe Wallace, Leonard Mansfield, Kenneth Ezell, James Norton (captain), James Hicks, and Evans Simmons.

Second Row—Hamp Thomas, John Coben, Wilson Summar, Peyton Alsup, Freeland Bennett, Brown Mims, Claude Carroll, and Clofton McGehee.



VARSITY BASEBALL SQUAD

First Row—Red Owen, Jeff Harlan, Jean Battle, Clofton McGehee, Myles Baskin, Gilbert Gordon, and Ed Hessey.

Second Row—Hamp Thomas, Freeland Bennett, J. W. Jackson, Theophilus Basham, Brown Mims, Jimmie Norton, Kenneth Ezell, and Coach F. M. Waller.



Tennis Squad



Cheer Leaders

BOB HITT	MARY ADAMS
POLLY OWEN	RED SUTPHENS



WOMAN'S ATHLETIC COUNCIL

Officers

LOVELLEIN WETZEL
SARA GEORGE VENABLE
BULEAH DAVIS
MIRIAM ANDERSON
MISS TOMMIE REYNOLDS

President
Vice-President
Secretary
Treasurer
Sponsor

Members

VERNA ELLIS
REBECCA HASKINS

MARY SMITH

CORNELIA GALLIAN
BEATRICE STORLY



WOMAN'S ATHLETIC ASSOCIATION

Officers

ROSA WHITELY
MARY JONES
ADELINE BASHAM
MISS TOMMIE REYNOLDS

President
Vice-President
Secretary-Treasurer
Sponsor



Intramural Basketball



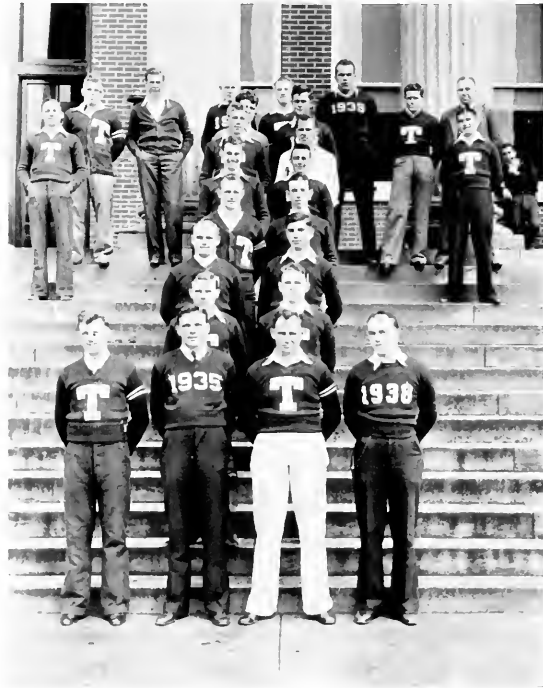
Intramural Volleyball



Intramural Baseball Teams



Tennis Squad



VARSITY CLUB

Officers

CHARLES SARVER
GRAY SANDS
E. M. WALLER

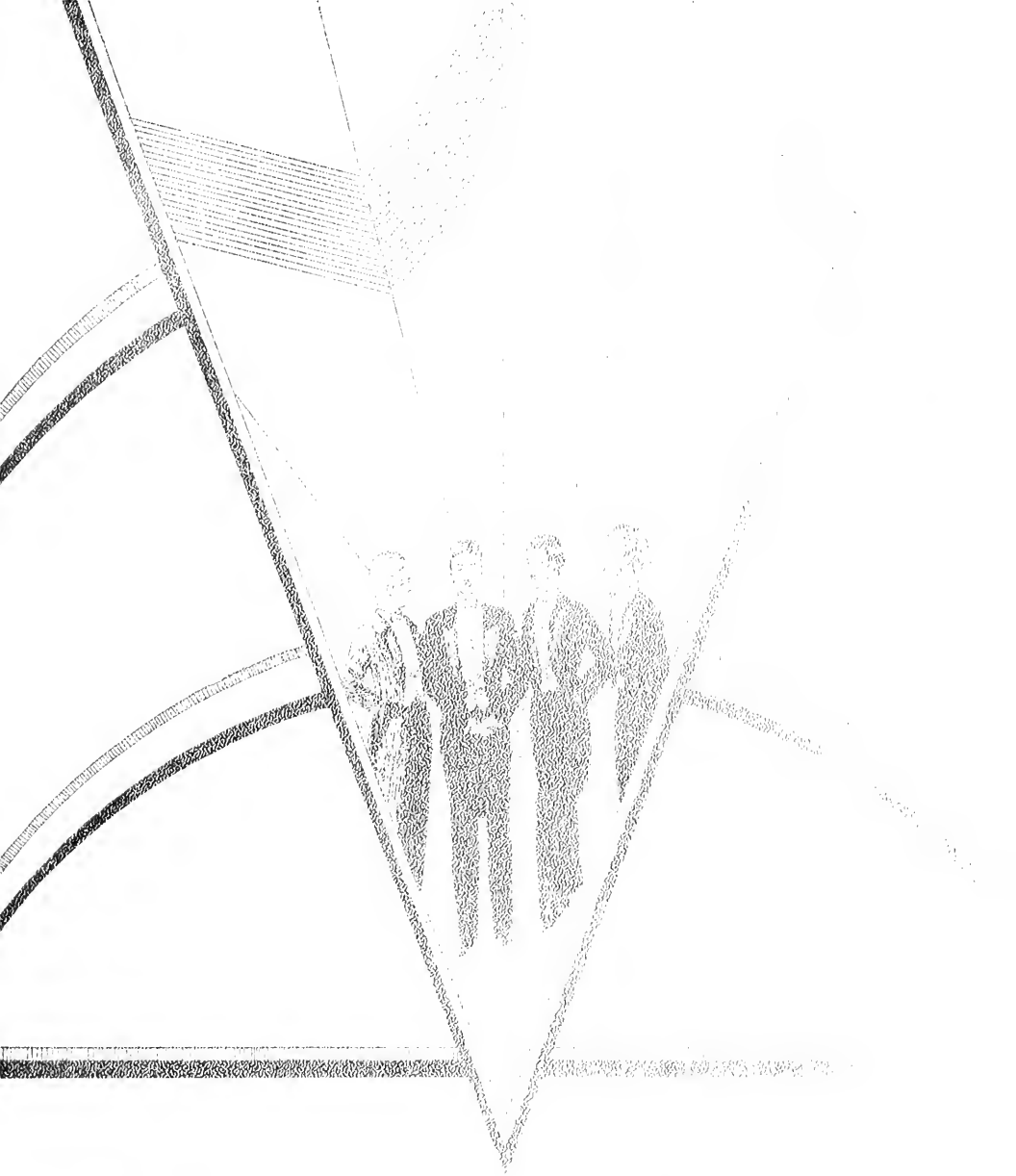
..... *President*
..... *Secretary-Treasurer*
..... *Sponsor*

Members

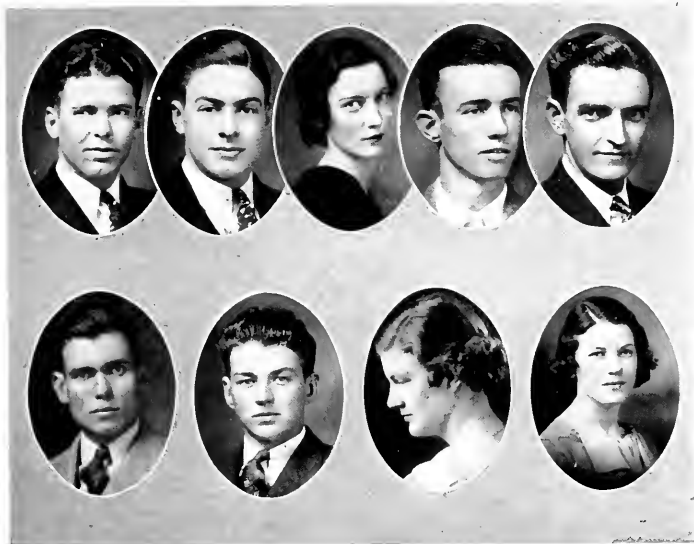
RED OWEN
GRAY SANDS
GEORGE SHARPE
JOE WALLACE
JEFF HARIAN
JOHN HOOVER
BILL OVIKBY
CLOFTON MCGHILL
HAMPTON THOMAS
KENNETH EZELL

JIMMY NORTON
ED HISSLY
JIMMY CARTER
JEFF PATI
TODD JACKSON
J. W. JACKSON
LEONARD MANSFIELD
JEAN BATTLE
FREDLAND BENNETT
JAMES HICKS

CHARLES SARVER
HOMER PITTARD
MYLES BASKIN
COACH FREEMAN
BURR SIMMONS
PITTON AINSUP
J. B. EDWARDS
GRANVILLE WAGGONER
HARTWELL BIASLEY
COACH WALLER



ORGANIZATION



THE 1935 MIDLANDER STAFF

WILFORD BRANDON
WILLIAM BLAKE CARLYON, JR.
JANE ELLIN MANKIN
KENNETH EZELL
ROBERT M. HITT
JOHNNY HINES
CLAUDE CARROLL
SARA GEORGE VINABE
MARY WILSON PAYNE

Editor-in-Chief
Business Manager
Assistant Editor
Advertising Manager
Organizations Editor
Feature Editor
Sports Editor
Assistant Sports Editor
Faculty Adviser



TAU OMICRON

Officers

HISLER ROGERS
 ELIZABETH SCHARDT
 MARY BENSON CAMPBELL
 JOSEPHINE BEACHBOARD
 LOVELL LYN WILZEL

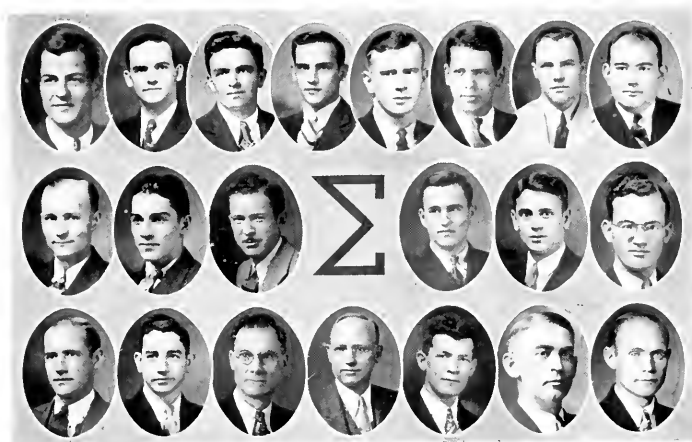
..... *Sponsor*
 *Sponsor*
 *President*
 *Secretary*
 *Treasurer*

Members

MARY JONES
 MARGARET WRIGHT
 COLLEEN BENNETT
 MARGARET GENTRY

MIRIAM ANDERSON
 AVIS MOORE
 MARY ELIZABETH WALKER
 ELIZABETH TRAVIS

MARTHA POTTS
 MARGARET DOUGLAS
 ALICE LYLE
 MARY WILSON PAYNE



SIGMA CLUB

Officers

SAM HAY
HARRY GOODMAN
CARL ADAMS

President
Vice-President
Secretary-Treasurer

Members

JACK ABERNATHY
CLAUDE ROBINSON
ROBERT WILSON
ALBERT MIDDLETON
D. F. ADRISSON
HERMAN CARROLL

ROBERT MURPHY
THOMAS GAULT
WATT SMITH
WILSON BROWN
JAMES TAYLOR
IRA DANIEL

LON SHELTON
NIAL D. FRAZIER
W. B. JUDD
MARION EUNLY
T. B. WOODMORI
ROY J. SIMPSON



WRITERS' CLUB

Officers

JANE ELLIN MANKIN
J. B. PLATON
PHILIP MANKIN

President
Secretary
Sponsor

Members

CHRISTINE STROOP
FLORENCE McCASLIN
MARTHA GOOPER
ABI MASON
FRANK MCGAVOCK

ROBERT MASON
FLOIS MORLON
REID HOOPER
MORSE RIDING
LETTA TRAPP
JOHN SIMS

BLAKEMORE OVERALL
FRANCIS SWELNEY
MARTHA GRAY
ELIZABETH McCLAREN
WILLFORD BRANDON



MEN'S GLEE CLUB

Officers

JOHNNY HINES
ROBERT M. HITT
ALLIE REAGOR PARKER

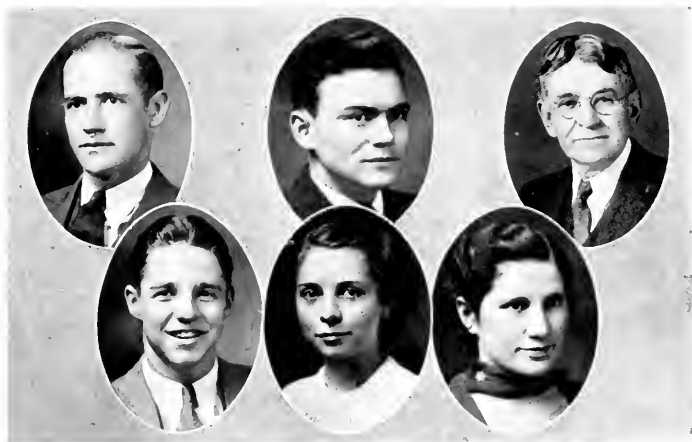
President
Vice-President
Secretary-Treasurer

Members

JAMES T. SMITH
JOHN H. ADAMS
BILL YOUNG
ROBERT HARPER

THOMAS HEWGLEY
WILL T. MALONE
BLAKEMORE OYTRALL

ROBERT MASON
ABI MASON
RILEY HOOPER
SANKIY KOIN



DEBATING CLUB

Officers

IRA DANIELS
W. C. SUMMAR
CHARLES D. LEWIS

President
Secretary
Sponsor

Members

JOE NETHERLAND
FRANCIS SWINLEY
OLA KIMMER



STUDENT COUNCIL

Officers

MARY JONES	President
MINNIE O. SHASTEEN	Vice-President
REBECCA HASKINS	Secretary
MISS MARGIE MITCHELL	Sponsor
MRS. MARSHALL BURNS	Sponsor

Members

COLLEEN BENNETT	JOHNNIE EDWARDS
ALICE LYLE	LOVELLEN WETZEL
MARTHA BELL	



Scene from *Hunchback of Notre Dame*



DRAMATIC CLUB MEMBERS

WILL T. MALONE
BLAKEMORE OVERALL
FLORENCE McCASLIN
CICIL WILB
ABE MASON
MARTHA MOORE GRACY
MRS. MARSHALL BURNS
JOHN SIMS
MARY JOE MORAN
THOMAS HEWGLLY
HATTIE JINKINS
MILDRED STONE
CORINNE CARLTON
JANE ELLEN MANKIN
BULEAH DAVIS

LOUISE GOWER
SARA EMMA MORRIS
HERMAN CARROLL
LUCY GRIFFIN
WILLIAM BLAKE CARLTON, JR.
KATHERINE COPPINGER
ALLIE REAGOR PARKER
OWEN GRIFFIN
PRESTON BRAY
LOUISA WINN
PEGGY GOLDSTEIN
ROBERT M. HITT
JOHNNY HINUS
HENRIETTA BOWDEN
WILSON HOOVER
FRANCIS SWEENEY

FRANK JONES
POLLY ANN WORKMAN
MARGARET MAHONY
CHRISTINE STROOD
ETHILYN FAITH
DILLA SNEED
MARGARET WRIGHT
OCTAVIA ROGERS
ELIZABETH WLAVER
JOHN RUCKER
BOB MURPHY
MORSE RIDING
MELVILLE REYNOLDS
GLADYS ERWIN
CHARLIS SCHARDT



GIRLS' GLEE CLUB

Officers

MARGARET WRIGHT
ELIZABETH TRAVIS
MARGARET GENTRY
ADELINE BASHAM
E. MAY SAUNDERS

President
Vice-President
Secretary
Treasurer
Director

Members

FROSTY EARTHMAN
ELIZABETH WEAVER
GLADYS SYKES
ADELINE BASHAM
MARY ESTES
MARGARET GENTRY
CORNELIA HARRISON
ELIZABETH TRAVIS
BLANCH KNIGHT
BILLY BAKER
REBECCA WILKINSON

ELDON CARNAHAN
RACHEL CLARK
OUIDA LOWRY
MARGARET WRIGHT
LUCILLE DRYE
FRANCIS ROGERS
LETTICE BRATCHEE
ERLINE JENNINGS
JEWEL MITCHELL
MARGARET HITT
MRS. AMY WOODYARD

GINIVA RIGSBY
DILLA SMITH
MARIE DE FRIEN
ROSA WHITELY
RUBY MORRIS
MARY ELIZABETH WALKER
IRLENE WILLIAMS
CLIMENHA THOMPSON
ELLA MAE McCUTCHION
MARGARET SHARPE
CORINNE CARLTON



BAND

Officers

RHODA LIE MOORE
 AVIS MOORE
 WILL T. MALONE
 DR. W. M. MELBANI

President
Vice-President
Secretary
Director

Members

TRUMPETS
 JAMES LOKLY
 BILL WITZEL
 CLYDE FITZ
 MADISON DILL
 TOMMIE RYLANDS

TROMBONES
 RUFUS BUCHANAN
 MARY E. BOYD
 LOUISA WINN
 MAMIE COOK

ALTOS
 MARGARIT DOUGLAS
 MARGARIT WRIGHT

MARGARET GENTRY
 ELIZABETH TRAVIS
 BARITONES
 THOMAS HUNGLEY
 CHRISTINE COOK
 JOHN JOLLY

SAXOPHONE
 JERRY WOMACK
 AVIS MOORE

CLARINETS
 RHODA LIE MOORE
 ALLIE PARKER
 WILL T. MALONE

RACHEL CLARK
 ROBERT MURPHY
 TOM MUSE
 JOHN M. MANLEY

BASSES
 JOHNNY HINES
 WATT SMITH

DRUMS
 CHARLES SCHARDT
 JACK HUGHES
 VAN FOX

CYMBALS
 MARTHA MOORE GRACY



ORCHESTRA

Mrs. AULTMAN SANDERS

Director

FIRST VIOLINS

MARGARET WRIGHT
ANDRIANA CROCKETT
MELVILLE REYNOLDS
MARY WILSON PAYNE
RUTH PATE
MARIE DE FRISI
MIKE JONES
JANE MALONE

SECOND VIOLINS

MARY ELIZABETH WALKER
ERLINI JENNINGS
LOUISA WINN
RUTH GILLSPIH
MAYMI COOK
F. MAY SAUNDERS

CELLOS

AVIS MOORE
GENE CROCKETT

DRUMS

WILL T. MALONE

VIOLA

MARY ELLANOR BOYD

BASS VIOLIN

TOMMIE REYNOLDS

TRUMPETS

JAMES LOKY
LOVELLEN WITZEL

CLARINETS

ALLIE R. PARKER
RHODA LEE MOORE
JOHN M. MANLY

ALTO HORNS

MARGARET GENTRY
W. M. MIBANE

TROMBONE

RUFUS BUCHANAN
BASS HORN
THOMAS HEGGLY

PIANO

CHARLES SCHARDT



HOME ECONOMICS CLUB

Members

THELMA BEASLY
MARY CAMPBELL
DOROTHY CLARK
LAURA LOVELL
KATHERINE CLINARD
MAYME COOK
CHARLOTTE COTTON
ELLEN EARTHMAN
MARTHA GUSHERT
MARY CLIFTON HUNTER
MRS. VASHTI JAKES
RACHEL JONES
BONNIE LANGFORD
MARY JOE MORAN

SALLIE MAE RING
PAULINE ROBERTS
OCTAVIA ROGERS
MARIETTA SAWYER
JANICE SIMS
MAIRA SCOTT
VIRGINIA STARBUCK
MAY LOVE STEGALL
MARIE THOMAS
IDABELLE WADE
NELLE WALKER
IRENE WILLIAMS
OPAL DICKSON
PAULINE MALONE

AVINE KOONS
BERTHA McFERRIN
MAUDE MITCHELL
MARTHA CAPPS
JUANITA BURKS
CLARA MANOR
RUTH GILLISPIE
MISS AGNES LITTELL
MISS MAY C. FRANK
MRS. HOMER LAWS
VIRGINIA HITT
LETITIA CLARK
ALLIENE REED
MYRTLE FOUTCH



ASSOCIATION CHILDHOOD EDUCATION

Officers

MARGARET HITT
 MRS. AMY WOODYARD
 KATHERINE COPPINGER
 LULA ROSSON
 SARAH BOONE FULLER
 PAULINE ROBERTS
 MARY FRIZZELL

President
Vice-President
Vice-President
Secretary
Treasurer
Program Chairman
Sponsor

Members

ALEXANDER, RUTH
 BARNIS, BILLIE
 BARTON, ELLIEN
 BLASLY, THELMA
 BARKER VIVA
 BASS, LAURA
 BINGHAM, NELL
 BOWLING, LAVADA
 BOVILL, DAISY
 BRATCHER, LETRIS
 BROWN, ELIZABETH
 CAMPBELL, MARY
 COOPER, MARTHA
 COPPINGER, KATHERINE
 FEDER, NANCY
 FAHJ, ETHELYNE
 FRENCH, ELIZA
 FULLER, SARAH BOONE
 GRAHAM, ELIZABETH
 GRIFFIN, MYRA
 GRIFFIN, LUCY
 HASKINS, REBECCA
 HILTON, RUBY
 HITT, MARGARET
 HOOPER, MARY
 HOOVER, ELIZABETH

HOOVER, FANNY
 HOOVER, RUBY
 JAKES, MRS. VASHTI
 JENKINS, HATTIE
 JERNIGAN, ANNIE D.
 JERNIGAN, ANNIE
 JONES, RACHEL
 KIMMIR, OLA
 KENNEDY, THELMA
 KERR, LUCILLE
 KIRBY, COBY LEE
 LAWRENCE, HENRIETTA
 LAWSON, INA BIANCHI
 LITTELL, CORNELIA
 LOWELL, LAURA CRAIG
 MANOR, CLARA
 MARTIN ELLIEN
 MCBRIDE, ANNIE RUTH
 MCGAVOCK, MARY MANN
 MCGHEE, LUCILLE
 MCKELVY, OLITA
 MITCHELL, KATHRYN
 MOORE, NELLIE
 MORTON, ELOISE
 MYATT, MAYMI
 NELL, ELIZABETH

PASCHAL, MRS. MAYNETTE
 RILEY, ODA
 RING, SALLIE MAY
 ROGERS, RIBA FRANCIS
 ROBERTS, PAULINE
 ROSSON, LULA
 SHAPARD, JEAN
 SHASTLEN, MINNIE O.
 SNELL, AZILE
 STUBBLEFIELD, LOTA
 SYKES, GLADYS
 TALLANT, DOROTHY
 TAIT, THELMA
 THOMPSON, CLIMINTIA
 UMBRAUGH, MARY FRANCIS
 WALKER, MARY LOU
 WILMS, LOIS
 WILLIAMS, ALMA
 WILLIAMS, ANNE
 WILLIAMS, THELMA
 WILSON, PAULINE
 WINNIE, MILDRED
 WINSTAD, DI ALVA
 WARRIN, VIOLETT
 WOODWARD, SARA ANNE
 WOODYARD, MRS. AMY



STUDENT CHRISTIAN UNION

Y. W. C. A. Officers

BULLAH DAVIS
LULA ROSSON
MARY CAMPBELL
VIRGINIA WILKINSON
LAURA LOVILL
FLORENCE McCASLIN
JANIE VAN PELT
FRANCIS JOHNSON
ETTA TRAPP
MRS. MARSHALL BURNS

President
Vice-President
Secretary
Treasurer
Reporter
Dramatic Director
Song Leader
Pianist
Critic
Sponsor

Y. M. C. A. Officers

CLOFTON MCGEHIE
WILSON C. SUMMAR
JOHN SIMS
FRED NEWMAN
B. B. GRACY

President
Vice-President
Secretary-Treasurer
Reporter
Sponsor



WOHELO CLUB

Members

BURR SIMMONS
HUMPY CAMPBELL
NAT PUCKETT
ROY WALTZ
LORINE NEECI
STUMPY SARVER
LUKLY MANNHEID
JOF TROOP

FREELAND BENNITT
MAMMY BASS
RACHEL JONIS
AUDREY ROI
WAG WAGGONER
DOT GOODALL
EARL COLEMAN
SARAH LEE FULLER
SOUP AINSUP

DUDLEY SANDS
JOHN HOOVER
BROWN MIMS
NELLIE KEITH
EMMA BRAMBLITT
LOUISE POWERS
OLA KEMMER
CLIFTON MCGIHLE



RURAL LIFE CLUB

Officers

	<i>Fall</i>	<i>Winter</i>	<i>Spring</i>
President	PEYTON ALSUP	SARAH GEORGE VENABLE	HOYTE OWEN
First Vice-President	CLOFTON MCGHEE	HARRY GOODMAN	CRANVILLE WAGGONER
Second Vice-President	SARAH GEORGE VENABLE	SAM FLURY	AUDREY ROE
Secretary	BULEAH DAVIS	RUTH ALEXANDER	RUTH ALEXANDER
Treasurer	MARY JONES	MARY JONES	MARY JONES
Sponsors	B. B. GRACY	K. T. HUTCHINSON	

Members

ABERNATHY, JACK	ELLIS, VERNA	LOWE, PEARL	SANDS, GRAY
ALEXANDER, RUTH	FULLER, SARAH BOONE	LYLE, ALICE	SARVER, CHARLES
ALSUP, PEYTON	GALLIAN, CORNELIA	MALONI, WILL T.	SAWYER, MARHTA
AYRIS, ANNIE RUTH	GOODMAN, HARRY	MANSFIELD, LONARD	SCOTT, OWEN
BAGWELL, ANNE	GRACY, MARTHA MOORE	MATTHEWS, JANIE	SHARPE, GEORGE
BASKIN, MYLES	GRAHAM, ELIZABETH	MCGHEE, CLOFTON	SHASTEEN, MINNIE O.
BASS, ALWILDA	GRIFF, EDD	MCGHEE, LUCILE	SMITH, MARY
BASS, ROBERT	HASKINS, REBECCA	NEWMAN, FRID	SORY, ELIZABETH
BENNETT, FREELEND	HISSEY, ED	NEWMAN, SHAD	STAMMER, JAMES
BINKLEY, GEORGE	HILWLEY, TOM	NICHOLSON, FRANCES	SUMMAR, WILSON
BRAMBLETT, EMMA	HICKS, JAMES	NORTON, JAMES	THOMAS, ERNEST
BRANDON, RUFUS	HITT, ROBERT M.	OVERBEY, BILL	THOMPSON, CLEMENTIA
BRANDON, WILFORD	HOOPER, REED	OWEN, HOYTE	TRAPP, ETTA
CARROLL, CLAUDE, JR.	HOOPER, JOHN	POWERS, LOUISE	TROOP, JOE
CARROLL, THOMAS	HOOPER, WILLIAM	PITTARD, HOMER	TUCKER, TOMMIE
CARLTON, BILL	HOOPER, WILSON	PITTS, RAYMOND	VENABLE, SARAH GEORGE
COLLINS, BILL	JACKSON, J. W.	KEEVES, SARA	WHEELER, CHARLES
CROCKETT, SHELLEY	JONES, MARY	RION, SARA	WINN, LOUISA
CUMMINGS, HAROLD	JONES, MIKE	ROE, AUDREY	WORKMAN, PAULINE
DAVIS, BULEAH	KENNON, EMMLTT	RUCKER, ELLIS	WRIGHT, MITCHELL
DRAPLER, HOUSTON	LESTER, HARRY	RUCKER, JOHN	YOUNG, BILL

MEET THE JONES BOYS



CAUGHT AGAIN



FINESSING YOUR QUEEN



MACHINE IN ACTION



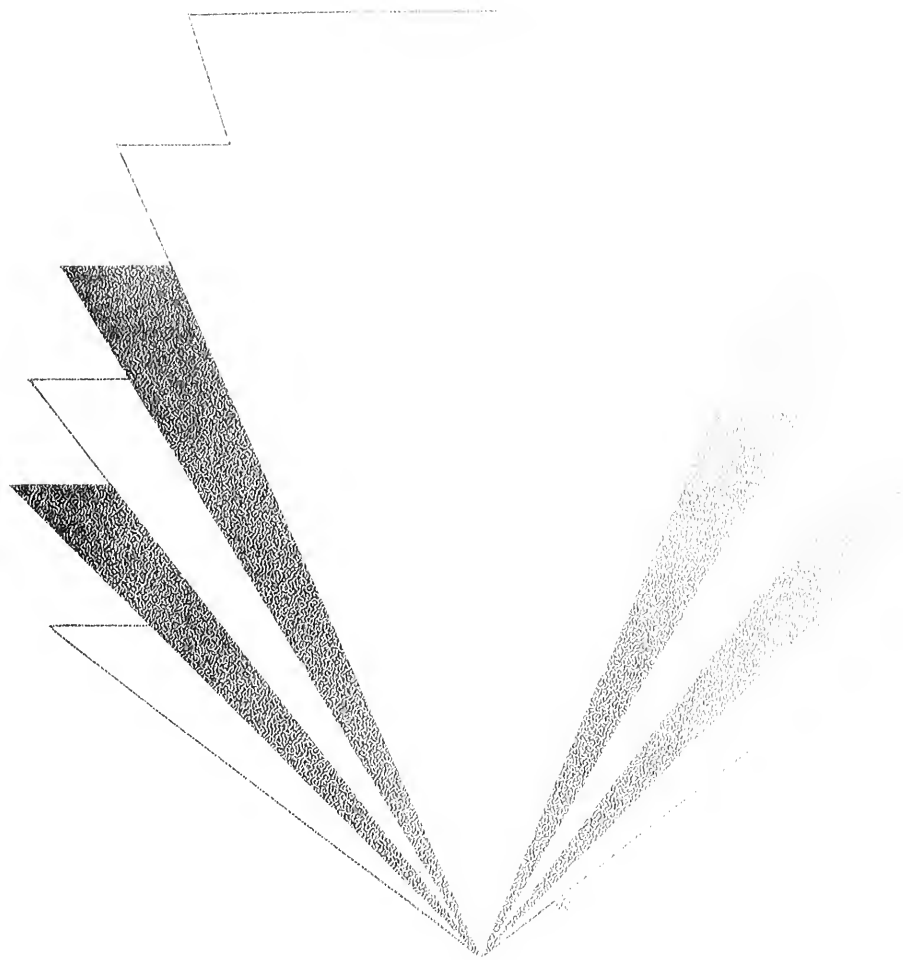
YOUNG AND HEALTHY



MEET THE FAMILY



SEEKING THE TRUTH



FEATURE



FRANCES NICHOLSON
Queen of Love and Beauty



REBECCA HASKINS
Most Popular Girl

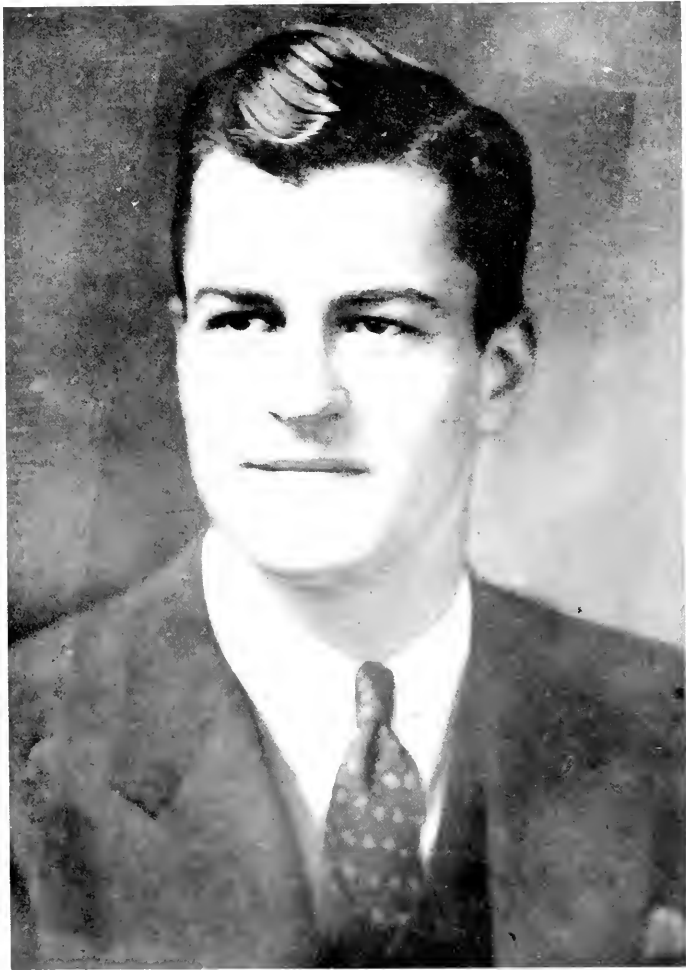


VERNA MAI ELLIS

Most Versatile Girl



WILLIAM BLAKE CARLTON, JR.
President of Student Body



SAM HAY
Best All-Round Student



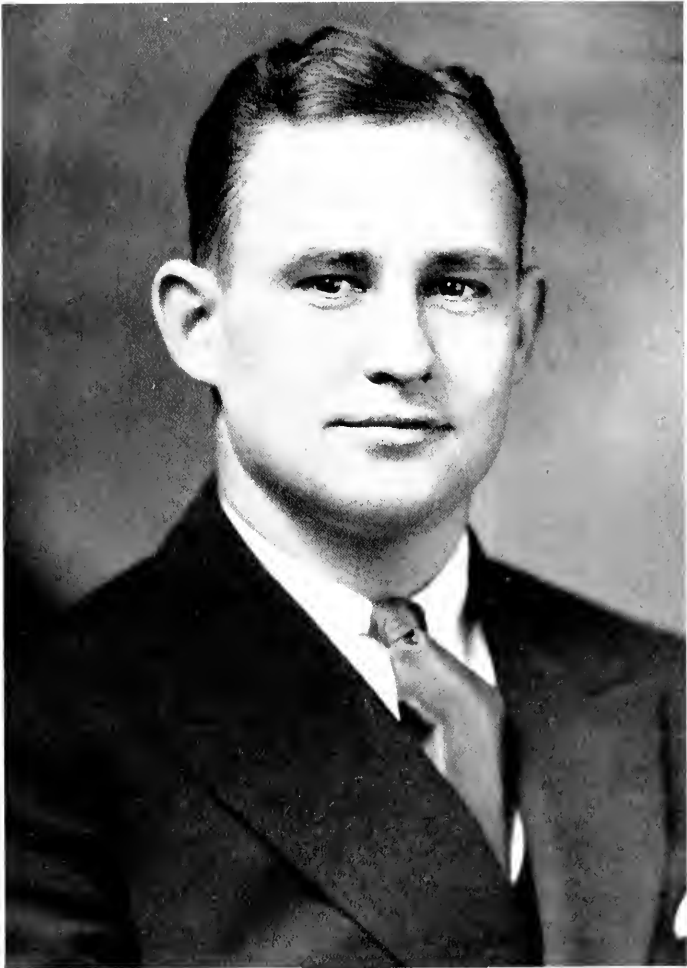
ROBERT M. HITT
Prince of Personality



GRAY DUDLEY SANDS
Bachelor of Ugliness



JAMES A. NORTON
Most Versatile Boy



GEORGE SHARPE
Master of Salesmanship



By their Fruits



COMUS



MORPHEUS



MINERVA



AEOLUS



SIREN



ATLAS



MOMUS



EROS



APOLLO



ANCHISES



NARCISSUS



ARACHNE

FEATURETTES

Here and There



Autographs



Ads



STATE TEACHERS COLLEGE

MURFREESBORO - - TENNESSEE

•
OFFERS A


Four Year Course Leading to
Degree of Bachelor of Science

•
A MEMBER OF

Southern Association of Colleges and Secondary
Schools

The American Association of Teachers Colleges
The Southern Interscholastic Athletic Association
The Tennessee College Association

•
For Catalog Address
P. A. LYON, President



•

We Invite Your
Patronage

MURFREESBORO
BANK AND TRUST
COMPANY

Affiliated with
The American National Bank
NASHVILLE

•

CITY TAXI CO.
Courteous Service Day or Night

Operated by
JNO. D. REEVES and NEIL FITE

PHONE 144

The College Girls'
Shop

STYLE SHOP

PHONE 77

A. L. SMITH & CO.
DRUGGISTS

Candy — Magazines — School
Supplies

Phone us your order

Compliments of

RAGLAND-POTTER
COMPANY

Use that

GOOD GULF GASOLINE

Trade at Gulf Service Stations

R. Y. MARTIN, Distributor

Compliments of

PIGGLY-WIGGLY

SOUTHEASTERN GREYHOUND LINES

LOW RATES — FREQUENT SERVICE

Terminal Phone 727

HOMER MAHOLLAND, Manager

EARTHMAN-WILSON MOTOR CO.



SALES

SERVICE

W. B. HORTON ROY P. NORRIS

HORTON GROCERY
COMPANY

Wholesale and Retail

STAPLE
AND FANCY GROCERIES
FEED AND SEED

PHONES 88, 89

MURFREESBORO
LAUNDRY CO.

LAUNDERERS
DYERS
CLEANERS

See Our S. T. C. Agent

STICKNEY & GRIFFIS

Everything you would expect to find in

A MODERN DRUG STORE

(West side Square)

C. R. BYRN MOTOR CO.

CHRYSLER-PLYMOUTH

Phone 33

MURFREESBORO

BELL BROS. & COMPANY, INCORPORATED

LUMBER AND BUILDERS SUPPLIES
PAINT, WALL PAPER AND GLASS

Tel. 176

Tel. 196

MURFREESBORO, TENNESSEE

NEWS WHILE IT'S NEWS

Complete Sports Coverage of S. T. C.

DAILY NEWS-JOURNAL

Why take a chance when you can
buy

MAGNOLIA BUTTER

Cannot be excelled in quality.
Costs no more than ordinary
butter

RUTHERFORD
COUNTY CREAMERY
ASSOCIATION

Phone 14 for

EGGS AND POULTRY

J. T. CARLTON & CO.

W. Main St.

H. G. HILL CO.

"It's a fact, you always do better at
Hill's"

FIT FOR A KING COFFEE
GRANDMA'S WONDER FLOUR



SINCLAIR

There is a Sinclair Service Station in your neighborhood. Patronize it
and be assured of getting Sinclair Motor Oil in sealed cans.

SINCLAIR REFINING COMPANY

S. F. HOUSTON, Agent

TELEPHONE 444

MURFREESBORO BREAD & ICE CREAM CO.

Try Our Delicious

"SALLY ANN" ICE CREAM

Sold at Leading Drug Stores

"Dunk"

"SALLY ANN" DOUGHNUTS

with your friends at the cafeterias

"SALLY ANN" BREAD

Rolls and Cakes

AT ALL THE GROCERIES

CLARK DAIRY PRODUCTS COMPANY

Incorporated

MANUFACTURERS OF

DAWN BUTTER and CREAM CHEESE

Try . . .

**WOCO PEP MOTOR FUEL
AND TIOLENE MOTOR OILS**

And Check the Performance of Your Car
PURE OIL COMPANY OF TENNESSEE

H. P. AND F. E. ALLEN, Agents

Compliments of

**The
Rosary**

**COOK'S
SERVICE STATION**

PHONE 110

**CANNON'S QUALITY
MARKETS**

"Where-U-Save"

Phone 1053

GROCERIES AND FRESH MEATS

McCORD & HARRIS

THE REXALL STORE

Phone 187

SCHOOL SUPPLIES
SPORTING GOODS
DRUGS AND SUNDRIES

Here's My Check—Gladly

I am satisfied it represents value Received and I know my firm can offer you equally great satisfaction. When you are in need of petroleum products please be kind enough to remember the . . .

**PAN AMERICAN PETROLEUM
CORPORATION**

T. J. DEMENT, Agt. — Phone 75

Compliments of

COMMERCE UNION BANK

MURFREESBORO, TENN.

Built on Confidence

GROWING THROUGH SERVICE

ELECTRIC SHOE SHOP

We Appreciate Your Patronage

S. T. C. Students Welcome

Southeast Corner of Square

SHEARIN BROS.

**C. B. LEATHERMAN AND
COMPANY**

**DRY GOODS AND LADIES'
READY-TO-WEAR**

We Appreciate S. T. C. Patronage

PHONE 69

**JAMES K. POLK
BEAUTY SHOPPE**

Quality Service by
Experienced Operators

Phone 493

MRS. OLA HAYES SMITH
MRS. BEN REEVES

**BOB'S
GROCERY**

**BOULEVARD
STORE**

Groceries and Meats
Gas and Oil

Ice Cream and Drinks

PHONE 476

Goldstein's
GOOD CLOTHES

S. T. C. Headquarters

CONSUMERS SUPPLY COMPANY

ICE AND CONSUMERS ICE CREAM

"A Home Concern for Home People"

Cecil Frods
FRENCH SHOPPE
INCORPORATED

MURFREESBORO, TENN.

Shope Individual

READY-TO-WEAR ACCESSORIES
MILLINERY

PHONE 382

COMPLIMENTS OF

Colonial Coffee and Colonial Foods

Distributed by

C. B. RAGLAND CO.

NASHVILLE, TENNESSEE

Everything for Kitchen, Dining Room
and Nursery

PHILLIPS & BUTTORFF MANUFACTURING CO.

NASHVILLE, TENNESSEE

**C. B. ARNETT'S MEAT
MARKET**

Fresh and Cured Meats

Phone 185

KERR & MARTIN

Drug Store

We Frame Pictures at
Little Cost

East Side Square

Telephone 45

WOODFIN & MOORE

Phone 90

AMBULANCE

A NY WHERE
NY TIME
NY PLACE

BROWNS'

BROWN BILT SHOE STORE

"Specialist in Smart
Foot Covering"

COLLEGE INN

Where Friends Meet

Curb Service

**PLATE LUNCHES
TOASTED SANDWICHES**

Just Off the Campus

PHONE 340

**TIP TOP
BARBER SHOP**

"S. T. C., We're
Behind You"

**JACOBS PACKING
COMPANY**

Packers of

**FOOD PRODUCTS THAT
SATISFY**

NASHVILLE, TENN.

**McKAY-CAMERON
COMPANY**

Nashville, Tennessee

GLASS—CHINA—SILVER

Cooking Utensils for Hotels,
Restaurants, Colleges

J. C. PENNEY COMPANY

OLD FASHIONED

in our insistence of honest values

BUT MODERN

in style and service

BUCHANAN & TARPLEY
DRUGS

TENNIS SUPPLIES — SODA WATER

Phone 7

We Deliver Your Order

F. W. WOOLWORTH
COMPANY

Complete Line of
SCHOOL SUPPLIES

TRAVIS & GREGORY

Harness — Hardware

SHOE REPAIRING

212 W. Main Street

Compliments of

LAMB COFFEE CO.

MAGNOLIA COFFEE

PHONE

37

Firestone
SERVICE STORES

MURFREESBORO, TENN.

303

W. College St.

SCHOOL ^{and} COLLEGE
ANNUAL
PUBLISHERS
PERSONAL SERVICE
AND CO-OPERATION

"The Modern Printers"

McQUIDDY
PRINTING & COMPANY

PRINTERS & PUBLISHERS

NASHVILLE ~ ~ TENNESSEE





3 3082 00529 0340

CALL NUMBER

T
378.768
M58m
1935

90-04708

Middle Tennessee State University

AUTHOR

Midlander

TITLE

LIBRARY

**MIDDLE TENNESSEE STATE UNIVERSITY
MURFREESBORO, TENNESSEE**

